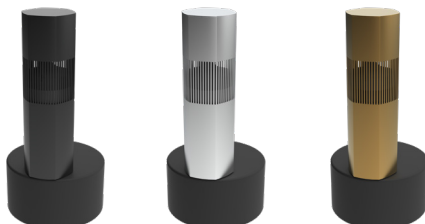




## Ambisonic Bollard Collection

### The Landscape Bollard 10



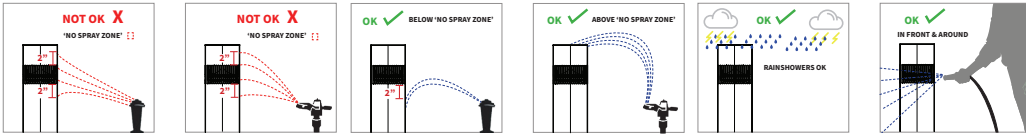
ALSB106BLK • ALSB106SK • ALSB106CHK

MODEL	ALSB106BLK • ALSB106SK • ALSB106CHK
COLOR	Black • Silver • Champagne
Woofer	10" (254mm) Polypropylene Woofer
Midrange	6 ½" (165mm) Polypropylene Midrange
Tweeter	1" (25mm) HD Aluminum Conical Ribbon Tweeter
Frequency Response	48HZ - 20KHZ
Power RMS	60W
Power Peak	100W
Impedance	6 Ω (Sub) / 4 Ω (Sat)
Transformer Taps	Selectable 8 Ω, or 70V: 100W Midrange   200W Subwoofer 100V: 100W Midrange   200W Subwoofer
Subwoofer Enclosure	Ø 17 ²³⁄₃₂" (450mm) • 9 ¹⁄₁₆" (243mm) Depth
Sleeve Dimensions	8 ¹⁄₁₆" x 8 ¹⁄₈" (220 x 206mm) Hexagonal Widths 27 ³⁄₁₆" (691mm) Height (includes 5mm sleeve base)
Total Height	36 ¾" (933mm)
Enclosure Material	Poly Composite, Weather Resistant Enclosure

*Please refer to [ambisonicsystems.com](http://ambisonicsystems.com) for the full installation guidelines.*



*Scan the QR Code for full instructions for this product.*



## SYSTEM PLANNING

The Landscape Bollards should be strategically placed to evenly distribute sound throughout the outdoor area. It's also recommended that the speakers be installed at a location such that the water sprinkler nearby (if any) does not spray the water jet into or +/- 2 inches from vertical slots of the bollard shell. Fully plan out the locations of all buried subwoofers and wires before beginning the installation process.

## RECOMMENDED TOOLS

- Direct Burial Wire
- Shovel
- Wire Stripper
- Speaker Wire
- Screwdrivers
- Measuring Tape

## BURIAL INSTALLATION

Wire Length	Wire Gauge
0 - 100' (0 - 30m)	16
50 - 150' (15 - 45m)	14
Over 100' (30m)	12

