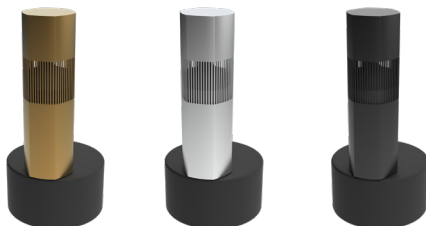




Ambisonic Bollard Collection

Luxury Landscape Bollard 8



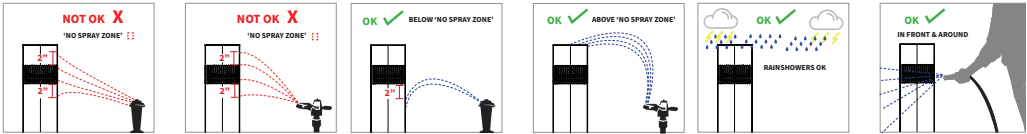
ALSB85CH • ALSB85S • ALSB85BL

MODEL	ALSB85CH • ALSB85S • ALSB85BL
COLOR	Champagne • Stargazing Silver • Midnight Black
Woofer	8" (203mm) Polypropylene Woofer
Midrange	5 ¼" (133mm) Polypropylene Midrange
Tweeter	1" (25mm) HD Aluminum Conical Ribbon Tweeter
Frequency Response	48HZ - 20KHZ
Power RMS	100W 50W
Power	200W 100W (Program) 400W 200W (Peak)
Impedance	6 Ω (Sub) / 6 Ω (Sat)
Transformer Taps	Selectable LoZ, or 70V: 100W Subwoofer 50W Midrange 100V: 100W Subwoofer 50W Midrange
Subwoofer Enclosure	Ø 15 ¾" (400mm) • 9 ¼" (230mm) Depth
Sleeve Dimensions	7 ⅞" x 6 ⅞" (188 x 176mm) Hexagonal Widths 22" (558mm) Height (includes 5mm sleeve base)
Total Height	31 ⅞" (788mm)
Enclosure Material	Poly Composite, Weather Resistant Enclosure

Please refer to ambisonicsystems.com for the full installation guidelines.



Scan the QR Code for full instructions for this product.



SYSTEM PLANNING

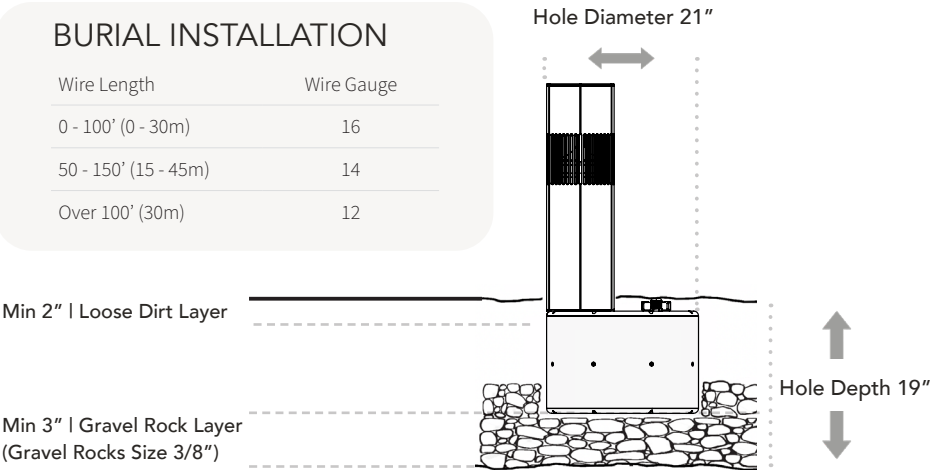
The Landscape Bollards should be strategically placed to evenly distribute sound throughout the outdoor area. It's also recommended that the speakers be installed at a location such that the water sprinkler nearby (if any) does not spray the water jet into or +/- 2 inches from vertical slots of the bollard shell. Fully plan out the locations of all buried subwoofers and wires before beginning the installation process.

RECOMMENDED TOOLS

- Direct Burial Wire
- Shovel
- Wire Stripper
- Speaker Wire
- Screwdrivers
- Measuring Tape

BURIAL INSTALLATION

Wire Length	Wire Gauge
0 - 100' (0 - 30m)	16
50 - 150' (15 - 45m)	14
Over 100' (30m)	12



AMBISONIC

07-01-24

6975 S Decatur Blvd, Las Vegas, NV 89118 • www.ambisonicsystems.com • 844-674-4461 • info@ambisonicsystems.com

©2024 Ambisonic. All copyrighted, trademarked and patented elements mentioned herein are the sole property of Ambisonic Systems.