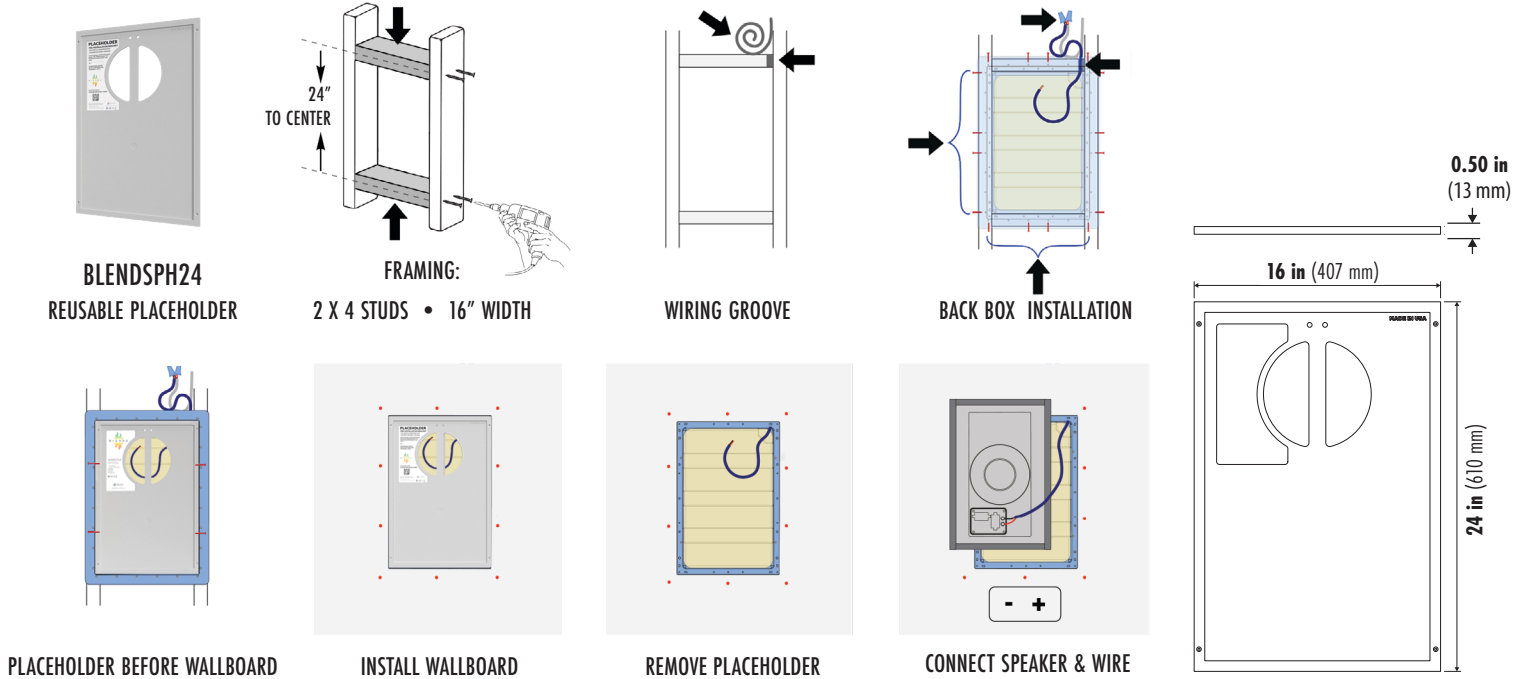


# BLENDSPH24 PLACEHOLDER



## RECOMMENDED APPLICATIONS



Fits the following speaker models: BLENDSPH24 • BLENDSPH24 • BLENDSPH24 • BLENDSPH24

The BLENDSPH24 Placeholder is re-usable and for temporary use in new construction. The greatest exposure to damage occurs from the time the Blends™ Invisible speaker panels are first mounted to the structural framing and when the taping begins. The BLENDSPH24 Placeholder keeps this damage to a minimum by reducing the speaker panels exposure on the construction site. They are packaged 6 per carton and come with mounting screws.

The BLENDSPH24 Placeholder can be installed over the BLENDSPH24 back box or directly onto the wood studs. The Placeholder has a 1/8" frame on the back side that will help you center it properly on the structural framing.

After the wall board is in place and you are ready to install your BLEND S speakers, remove the BLENDSPH24 Placeholders to install the speakers.

The BLENDSPH24 Placeholder is built from injection-molded plastic and is sized slightly larger than the speaker panel it is reserving space for. This ensures that no matter how tight the drywall is hung to the BLENDSPH24 Placeholder, the speaker panel will easily drop into place when the BLENDSPH24 Placeholder is removed. The BLENDSPH24 Placeholder should be installed at the speaker wire installation stage and replaced with the speaker panel just before drywall seam finishing begins. The BLENDSPH24 Placeholder has a label on the front with space to write in the Origin Acoustics dealer name and phone number.



Please visit [docs.originacoustics.com](https://docs.originacoustics.com) or scan the QR code using your smart device for the most up to date specifications and use instructions for this product. Products may only be purchased through an authorized integration partner.