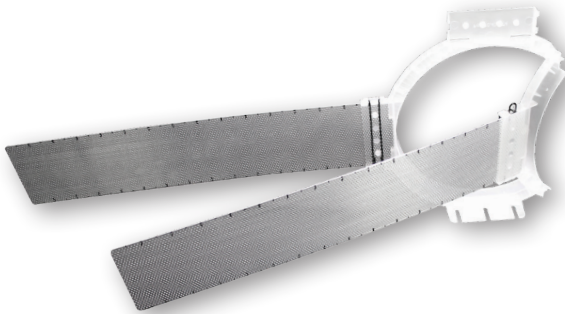




PROFESSIONAL COLLECTION | BRPC5

REUSABLE NEW CONSTRUCTION BRACKET • FITS PC50



Please visit www.originpro.com for the most up to date safety information and use instructions for this product.

INSTALLATION MANUAL

Table of Contents

1. Introduction	1
2. What's Included	2
3. Tools & Items	2
4. About the Reusable Bracket	2
5. Installing the Wings	3
6. Placing the Bracket	3
7. Cutting the Hole	4
8. Uninstalling the Bracket	4
9. Technical Assistance	5

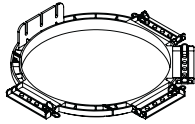


1. Introduction

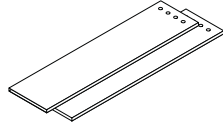
Thank you for purchasing the BRPC5 Reusable New Construction Bracket. At Origin PRO, we take pride in providing you with a high quality product. All of Origin PRO's products are designed to have excellent sound quality, longevity, and a simple installation process.

This instruction booklet covers the necessary information for a smooth installation, including: the tools you will need, step-by-step instructions for installation, troubleshooting tips for any errors that may occur, and all warranty information. If for any reason you experience problems or if you have installation questions please call us at (844) 674-4461. Hours of operation are 8:00am to 5:00pm (Pacific Time), Monday through Friday.

2. What's Included



Bracket



Wings (2)

3. Tools & Items

- Drywall Saw
- Drill
- Hammer
- Measuring Tape
- Screws
- Nails

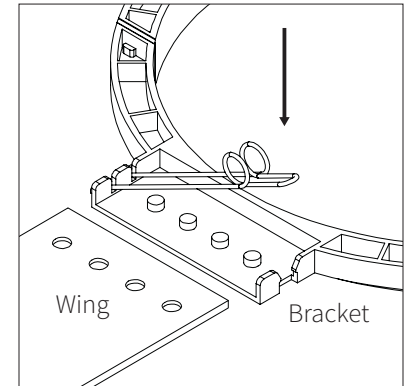
4. About the Reusable Bracket

Our Reusable bracket BRPC5 is designed to be used as a new construction bracket for our PC50 In-Ceiling speakers. Additionally, the center plastic ring can be removed once the sheet rock has been cut to accommodate our speaker. With the plastic ring you can simply attach a new set of installation wings and reuse the bracket for the next project you're working on. This will save you time and cost for your larger projects.

5. Using the Bracket

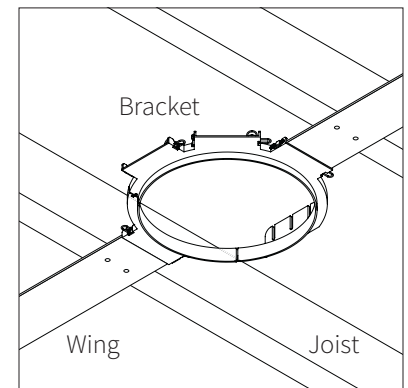
5a. Installing the Wings

Once desired speaker location is found, locate desired wing positions on the reusable bracket that coordinate with the ceiling joists for a secure fit. Line up and place the four pins of the bracket to the four holes of the wing. Attach the wings by locking in place with the included metal clips.



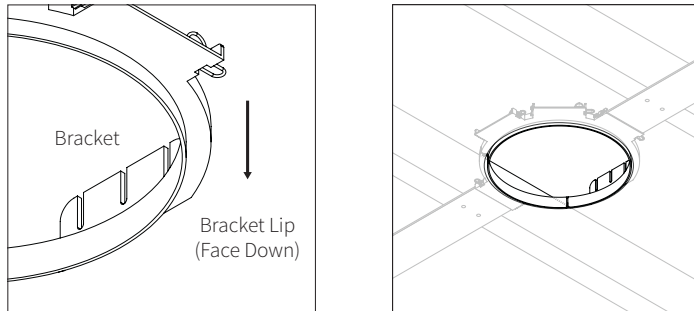
5b. Placing the Bracket

Place the bracket between ceiling joists using the ruler marks for your desired location. Either nail or staple the bracket wings to the joists.



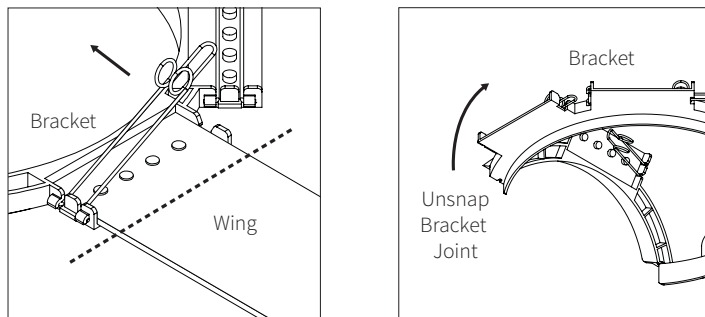
5c. Cutting the Hole

Make sure the “lip” of the bracket is facing down into the room. The “lip” allows the bracket to act as a template for cutting the speaker cutout in the sheet rock. Cut along the inside of the bracket hole where the hole should be. Use a keyhole or drywall saw to cut the hole.



6. Uninstalling the Bracket

To remove the bracket, squeeze the metal clips to loosen each wing. The wings can be cut if needed. They will not be used again. Once the wings are detached, unsnap the bracket at the joint to allow the bracket to bend for easy removal through the cutout. The bracket can be used again by adding another pair of REBRW20 wings.



7. Technical Assistance

If you have any questions or concerns about installing or using this product, you can reach us through one of the following methods:

Phone: (844) 674-4461

Hours of operation: 8:00am - 5:00pm (Pacific Time), Mon - Fri

If you are having technical trouble, please have your model number ready and be prepared to explain briefly what steps you took to resolve the problem, to be best helped over the phone.

If you are considering returning the product, it's required that you contact Origin PRO prior to any return attempts. This way we can determine if the issue can be resolved without returning the product, or if needed we can provide instructions and support for the return process.



08-22-23

6975 S Decatur Blvd, Las Vegas, NV 89118 • www.originpro.com • 844-674-4461

©2023 Origin PRO. All copyrighted, trademarked and patented elements mentioned herein are the sole property of Origin PRO.