

## TILE BRIDGES PCTB80 | PCTB60 | PCTB50

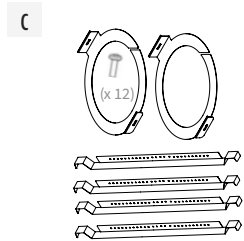
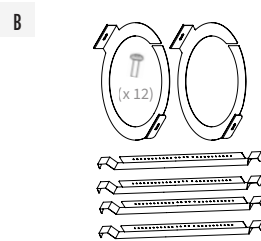
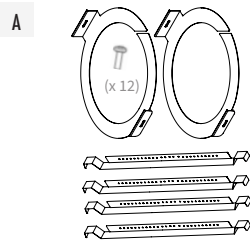
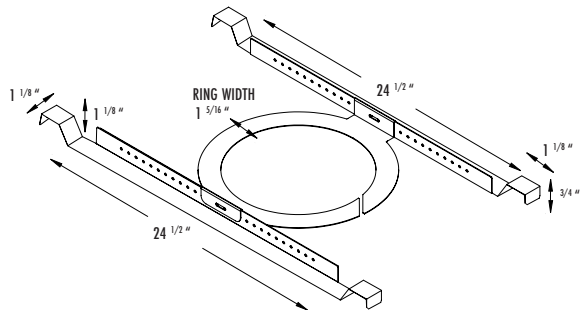
OVERVIEW

The Tile Bridge (PCTB) offers additional mounting support for Professional Collection In-Ceiling Speakers and may be used in drop ceiling installation applications involving acoustic ceiling tile 2' x 2' or 2' x 4'.

**A** PCTB80: Fits PCSUB8 | PC80 | PC60S

**B** PCTB60: Fits PC60

**C** PCTB50: Fits PC50

WHAT'S INCLUDED

Each Tile Bridge (pair), contains:

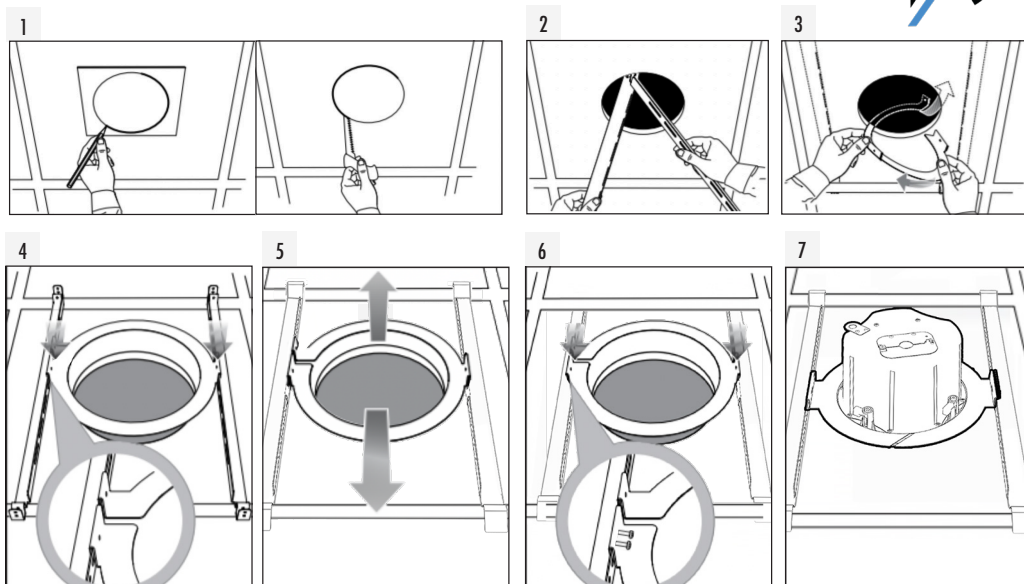
- Support Ring (x 2)
- Rails (x 4)
- Pegs (x 10) (Includes x 2 extra)

Please visit [www.originpro.com](http://www.originpro.com) or scan this QR code using your smart device for the most up to date safety information and use instructions for this product.



If you have any questions or concerns about installing or using this product, you can reach us by phone: (844) 674-4461 Hours of operation: 8:00am - 5:00pm (Pacific Time), Mon - Fri

## DROP CEILING INSTALLATION



1. Make cut-out hole in ceiling tile using template supplied with loudspeaker.
2. Insert the two rails through the hole.
3. Twist support ring into the hole. The ring is split to allow it to fit through the hole.
4. Align ring hole with rail holes and mount each end of rails securely onto the tee bars.
5. Center ring over ceiling hole.  
Typically, the ceiling speaker will be mounted in the center of the ceiling tile. The speaker can be mounted in other locations in the ceiling tile by moving the ring and/or tile bridge assembly if desired, however, care must be taken to ensure that the PCTB rails are properly mounted and secured onto the tee bars.
6. Once you have positioned the PCTB at the desired location, fasten the ring with the rails using the push-in pegs (included).
7. Sandwich the tile between the PCTB and the speaker bezel and tighten the speaker clamps.
8. Complete speaker installation and connections as directed in speaker's instruction manual.