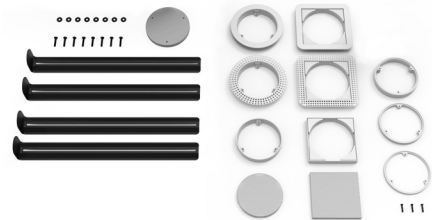
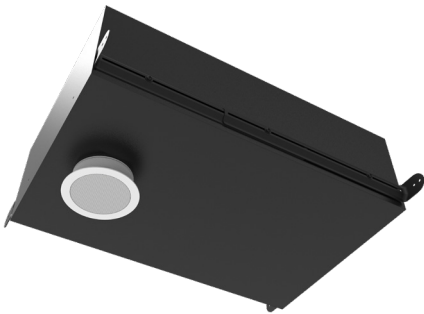


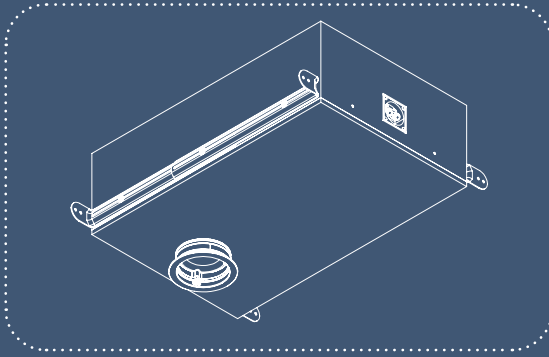
MOS36SUB • MINIMAL OPENING SUBWOOFER

SPECIFICATION

MOS36SUB

System Type	Minimal Opening Subwoofer
Driver Components	Two 6½" Poly Cone Subwoofers
Crossover	DSP Recommended LPF 160Hz or less 24 dB BW
Frequency Response	31Hz - 250Hz [- 10 dB] 42Hz - 170Hz [-/+ 3 dB]
Maximum SPL @ 1m	102dB Continuous, 107dB Peak
System coverage	100-degree conical
Sensitivity, 2.83V/1m	88 dB
Power RMS	100 Watts
Power Peak	200 Watts
Recommended Amp	50 - 250 Watts (FCT) @ 4 Ω
Nominal Impedance	6 Ω
Input Connectors	Gold Plated Spring Push Terminals
Enclosure	MDF
Mounting	Overlapping Formed Steel Straps, Adjustable from 14.5" - 22.5"





MOS36SUB

MODEL	MOS36SUB
PART	MOS3600SUB
Height	6 ³ / ₄ " (172 mm)
Width	14" (356 mm)
Length	22" (559 mm)
Weight	29.5lbs (13.4kg)

Please visit docs.originacoustics.com or scan this QR code using your smart device for the most up to date safety information and use instructions for this product.



**All warranties and warranty conditions are subject to change. Please refer to docs.originacoustics.com for the latest information.*