



# DSUB6



DSUB6F68K



DSUB6F5K



DSUB6F3K

DSUB8 INSTALLATION MANUAL

# **Table of Contents**

Introduction	1
1. Specifications	2
2. Required Tools	2
3. What's Included	3
4. Wire Recommendation	3
5. Planning	4
6. Installation Steps	5
6a. Installing the Enclosure	5
6b. Installation before Drywall	6
6c. Installation after Drywall	6
6d. Installing the Bayonet Ring	8
6e. Wire Routing	9
6f. Installing the Wire	10
6g. Wiring: Subwoofer Amplifier	10
6h. Wiring: 2-Channel Amplifier	11
6i. Bridging Connector	12
6j. Painting the Grille	14
6k. Installing the Grille	14
7. Troubleshooting	15
8. Technical Assistance	16
9. Warranty	17
10. Return Process	18



## **Introduction**

Thank you for purchasing the Director In-ceiling Subwoofer. At Origin Acoustics, we take pride in providing you with a high quality product. All of Origin Acoustics' speakers are designed to have excellent sound quality, longevity, and a simple installation process.

This instruction booklet covers the necessary information for a smooth installation, including: the tools you will need, step-by-step instructions for installation, troubleshooting tips for any errors that may occur, and all warranty information. If for any reason you experience problems or if you have installation questions please call us at (844) 674-4461. Hours of operation are 8:00am to 5:00pm (Pacific Time), Monday through Friday.

# 1. Specifications

## DSUB6F68K

**Part: DSUB6F680**

Woofer: Dual 6 ½" Polypropylene  
 Frequency Response: 33Hz-150Hz  
 Power Handling: 100-250 Watts  
 Impedance : 5 ohm/10 ohm/20 ohm  
 Dimensions: 7 ⅞" x 11 ⅞" x 19"  
 (200 x 300 x 480mm)

**Cutout Diameter: 8 ¾" (222mm)**

**Grille Diameter: 10" (254mm)**

**NOTE:** The 19" (480mm) length dimension includes additional 1" space on each side to accommodate connecting wires to the DSUB6 terminals, and port flange.

## DSUB6F5K

**Part: DSUBF500**

Woofer: Dual 6 ½" Polypropylene  
 Frequency Response: 33Hz-150Hz  
 Power Handling: 100-250 Watts  
 Impedance : 5 ohm/10 ohm/20 ohm  
 Dimensions: 7 ⅞" x 11 ⅞" x 19"  
 (200 x 300 x 480mm)

**Cutout Diameter: 5 ⅞" (149mm)**

**Grille Diameter: 7 ¾" (183mm)**

## DSUB6F3K

**Part: DSUB6F300**

Woofer: Dual 6 ½" Polypropylene  
 Frequency Response: 33Hz-150Hz  
 Power Handling: 250 Watts  
 Impedance : 5 ohm/10 ohm/20 ohm  
 Dimensions: 7 ⅞" x 11 ⅞" x 19"  
 (200 x 300 x 480mm)

**Cutout Diameter: 3 ¼" (83mm)**

**Grille Diameter: 4 ¼" (109mm)**

**DSUB6F68K/DSUB6F5K/ DSUB6F3K Tube Length: 20" (508 mm)**

**DSUB6F68K/DSUB6F5K/ DSUB6F3K Mounting Depth: 7 ⅞" (200mm)**

\*All product information is subject to change. Please refer to the dealer portal for the latest information.

# 2. Required Tools

- Drywall Saw
- Speaker Wire
- Pencil
- Wire Stripper
- Measuring Tape
- Drill
- Drill Bit ⅛" (3mm)
- Stiff Wire
- Stud Finder
- Fish Tape
- Spray Paint
- Compressed Air

### 3. What's Included

#### **DSUB6F68K (Kit consists of DSUB6 + PT68FT)**

DSUB6 – Dual 6 ½” In-Ceiling Subwoofer, Mounting Screws, Mounting Template, Installation Manual

PT68FT – 6” bandpass port tube, port flange, hose clamp, BR68 new construction bracket, and includes BZ68 bayonet ring, port adapter, round grille, hose clamp, (DSUB6T68) and Installation Manual

#### **DSUB6F5K (Kit consists of DSUB6 + PT5FT)**

DSUB6 – Dual 6 ½” In-Ceiling Subwoofer, Mounting Screws, Mounting Template, Installation Manual

PT5FT – 4” bandpass port tube, port flange, hose clamps, port new construction bracket, and includes trim ring and round grille (DSUB6T5), Installation Manual

#### **DSUB6F3K (Kit consists of DSUB6 + PT3FT)**

DSUB6 – Dual 6 ½” In-Ceiling Subwoofer, Mounting Screws, Mounting Template, Installation Manual

PT3FT – 4” bandpass port tube, port flange, tube clamps, port new construction bracket, hose clamps, and includes trim ring and round & square grilles (DSUB6T3), Installation Manual

### 4. Wire Recommendation

The gauge of wire used can have an impact on the performance of your speakers. Use a multi-stranded wiring designed for amplifier to speaker connections. Which gauge to select depends on the length of wire to be used on any particular speaker. The longer your run is, the larger your wire size must be.

Wire Length	Wire Gauge
0 -100' (0 - 30m)	16
50 - 150' (15 - 45m)	14
Over 100' (30m)	12

## **5a. Planning: Amplifier Wiring**

Will you be driving it with a 2-channel amplifier or a designated subwoofer amplifier?

The 2-channel option works fine but the separate subwoofer amplifier will allow you to adjust the subwoofer output to achieve the sub-to-satellite balance you want regardless of subwoofer location or number of satellite speakers used. If you opt for the separate subwoofer amplifier, you will need to run three paired speaker wires to the speaker location.

## **5b. Planning: Location**

Find a location for the subwoofer. Positioning it near the satellite speakers is visually and sonically advantageous; being close to walls, especially corners, is very helpful when maximum loudness is important. Start with where you want the port opening to be. Then determine where the enclosure needs to be placed to allow the port tube to easily reach the desired port opening location. For the subwoofer to fit, the joists need to be at least 14" apart.

## **5c. About Speaker Wire**

You will need a wire that has at least two conductors; one that can be identified as the positive and the other as the negative. All two conductor wires have some means of identifying which conductor is which, but at times this identification may be subtle. It's crucial that you keep track of which wire you use for positive (+) and negative (-). Typically if the wires are colored red and black, the red wire is used for positive and the black wire is used for negative, but sometimes other colors or patterns are used. You can choose whichever color of wire you want to be positive and negative as long as you remain consistent throughout the install.

On both your amplifier and your speaker the connectors will be identified as red for positive and black for negative. It is very important to look carefully at the speaker wires and be certain that the same wire that is attached to the positive connector in the amplifier is attached to the positive connector in the speaker.

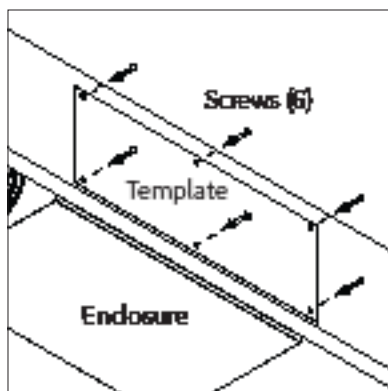
## **6. Installation Steps**

### **6a. Installing the Enclosure**

Hold the template to the joist that you plan on attaching the subwoofer enclosure to. Drill six holes through the marked locations on the template using a  $\frac{5}{16}$ " (8mm) drill bit. Face the enclosure's rubber damping pad towards the joist and secure it in place with the supplied lag screws and washers.

Use the 3" screws for 2" thick joists/trusses

and 2" screws for 1" or thinner joists/trusses. We recommend that one person holds the subwoofer in place while another tightens the screws to secure the DSUB to the joist.

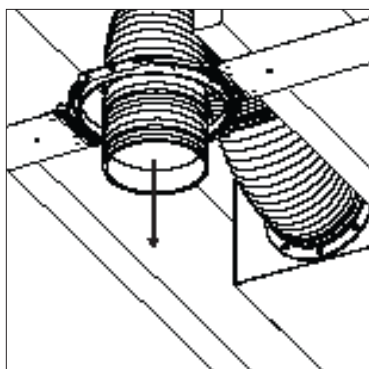


## 6b. Installation before Drywall

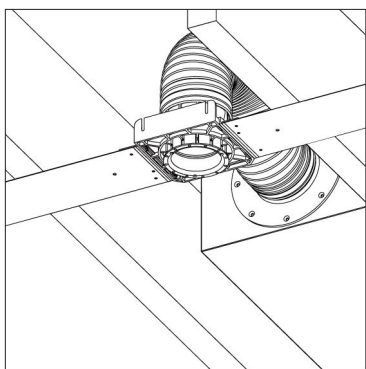
### DSUB6F68K/DSUB6F5K/ DSUB6F3K

Use the DSUB6F68K, DSUB6F5K, DSUB6F3K supplied screws to attach the port tube to the enclosure. Test the wired DSUB to see that it's working properly. If you are using 2 channels of input, make sure to test both.

Install the new construction bracket to position the hole for the port opening. You can attach it directly to a joist or use the supplied wings to position it precisely where you want it.



DSUB6F68K



DSUB6F5K, DSUB6F3K

### **IMPORTANT!!**

**WHEN INSTALLING THE SUBWOOFER, IT IS IMPORTANT TO REMEMBER THAT THE PORT TUBE NEEDS TO BE FULLY EXTENDED WHEN INSTALLED.**

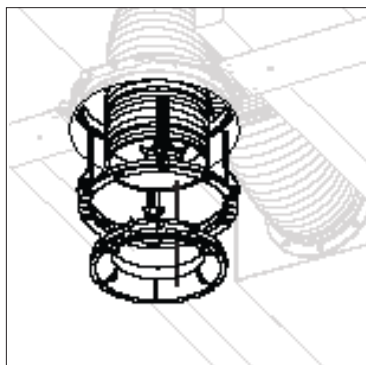
**If the Port Tube is too collapsed, the metal rings in the Port Tube can vibrate against each other and travel down the tube. This will cause a NOTICEABLE vibration noise to emanate from the subwoofer and lead to POOR PERFORMANCE.**



## **6c. Installation after Drywall**

### **DSUB6F68K**

Install the BZ68 bayonet ring. Pull the port tube through the ring, slip the port adapter into the end and tighten the screw on the hose clamp to get a snug, secure attachment.



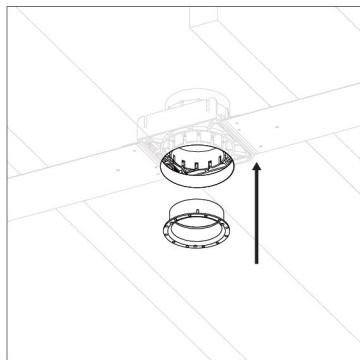
DSUB6F68K

Fit the port adaptor into the bayonet ring, and twist it clockwise into place.

You will probably want to twist the port adapter counterclockwise an inch or two before twisting it into the InstaMount so that the torque of the port tube doesn't accidentally "untwist" the port adapter when it's in use.

### **DSUB6F5K/ DSUB6F3K**

Insert the trim ring through the hole in the drywall and into the bracket opening. You may need to rotate it slightly to get it to seat into place. Using the supplied screws and a #1 Phillips screwdriver, fasten the trim ring to the bracket opening so that it fits snugly against the ceiling surface.



DSUB6F5K, DSUB6F3K

## **IMPORTANT!!**

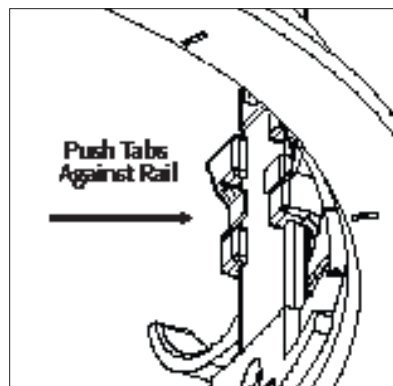
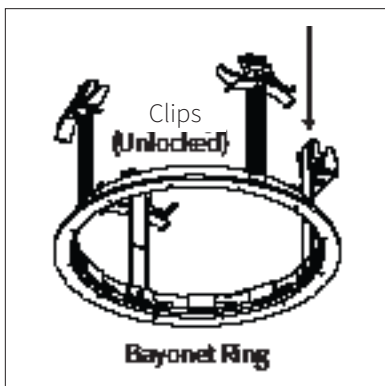
**WHEN INSTALLING THE SUBWOOFER, IT IS IMPORTANT TO REMEMBER THAT THE PORT TUBE NEEDS TO BE FULLY EXTENDED WHEN INSTALLED.**

**If the Port Tube is too collapsed, the metal rings in the Port Tube can vibrate against each other and travel down the tube. This will cause a NOTICEABLE vibration noise to emanate from the subwoofer and lead to POOR PERFORMANCE.**

## **6d. Installing the Bayonet Ring**

### **DSUB6F68K**

Adjust the clips so that they're positioned at the top of the rail. If they're not already there you can do this by pushing the metal release tabs on the inside of the rail and pulling the clips to the top of the rails. Insert the bayonet ring into the hole in the ceiling by gently bending the clips inward. Reach inside the bayonet ring and push the clips down so that the bayonet ring is firmly in place, but not too tight. If for some reason the bayonet ring needs to be removed, reach inside and push the release tabs to reset the clips. The bayonet ring can now be taken out.



## **6e. Wire Routing**

Plan how you'll route the wire to the desired speaker location. There are several methods for routing the wire, and you may need to combine several of them.

### **Behind the Baseboard**

The wire can be routed behind the baseboard by cutting a groove out of the back of the baseboard, or by buying special baseboard designed for concealing wires.

### **Through Walls**

When running wires through a wall, be sure to avoid all obstacles such as AC wiring, pipes, and ducts.

### **Attic or Basement**

When available, you can route the wire through an attic or crawlspace.

### **Under the Carpet**

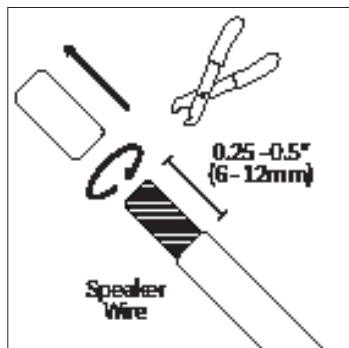
One option is to lift up the carpet and route "tape wire" under the carpet.

### **For New Construction**

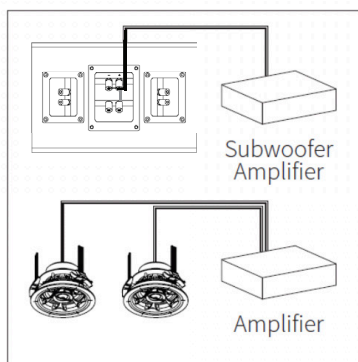
If these speakers are being installed in a new home during construction, the installation process will be a bit different (although much simpler). For these situations, it's recommended you purchase a bracket. Instructions on how to install the speakers are provided with the bracket, or can be found on our website. Visit [www.originacoustics.com](http://www.originacoustics.com) for more information.

## 6f. Installing the Wire

Strip  $\frac{1}{4}$  to  $\frac{1}{2}$  inches (6 to 12 mm) of the insulation off both ends of the wire. To avoid stray strands, twist them at the end. Connect the wire to the amplifier, and make sure the wire connected to the left speaker output will be routed to the left speaker, right output to right speaker, etc.



## 6g. Wiring: Subwoofer Amplifier



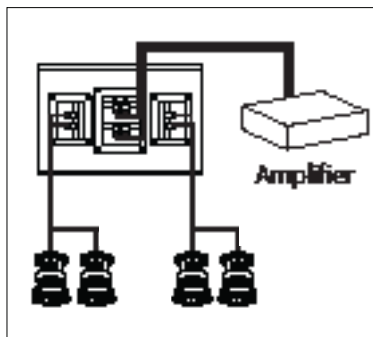
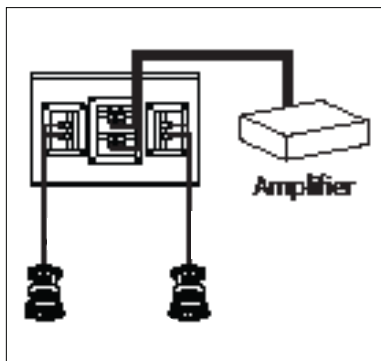
Insert the +/- channel wire from the Subwoofer Amplifier into the two of the DSUB6 input terminals labeled “Input from amplifier”, making sure that the positive wire is being attached to the red terminal and the negative wire is being attached to the black terminal. The satellite speakers will be wired directly to the 2-channel or 3-channel amplifier. This wiring method is recommended for D100, D80, D60, D50 and D30 speakers.

## 6h. Wiring: 2-Channel Amplifier

Remove the pair of Type A Connector that comes pre-installed to the DSUB6 input terminals. (See section 10 on next page). Insert the left & right channel wires from the 2-Ch Amplifier into the DSUB6 input terminals labeled “Input from amplifier”, making sure that the positive wire is being attached to the red terminal and the negative wire is being attached to the black terminal. You will also probably want to run the wires from the DSUB6 output terminals labeled “Output to speakers” at this time.

Only use 1 pair of D100, D80, D60 or D50 speakers with a single 2-channel amplifier.

Using up to 2 Director D30 speakers per channel is safe with 4 Ohm stable amplifiers.



## 6i. Bridging Connector

### DSUB6:

There are 2 types of terminal bridging connectors provided with DSUB6.



Type A connector (pair)



Type B connector

**TYPE A CONNECTOR** (equals to single 5-ohm connection):

A pair of Type A connector comes pre-installed to the sub input terminals, which connects the two woofers in parallel.

Type A connector is to be used when:

- Using only one DSUB6 with subwoofer amplifier, stable to 4 ohm



## **TYPE B CONNECTOR** (equals to single 20-ohm connection):

For connecting 2 or more subs in parallel with Subwoofer amplifier, use the separate Type B connector, included in box, as shown below on each DSUB6. Using this connector will double the impedance of each DSUB6. However, **first remove** the pair of Type A connector that is already pre-installed to the sub input terminals.

Type B connector is to be used when:

- Using 2 to 4 DSUB6 with subwoofer amplifier, stable to 4 ohm



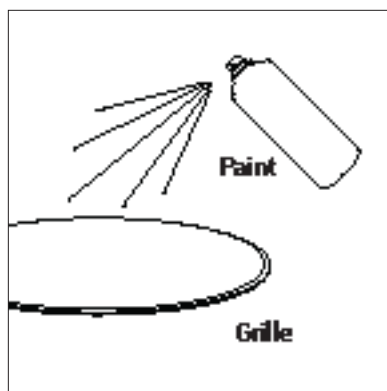
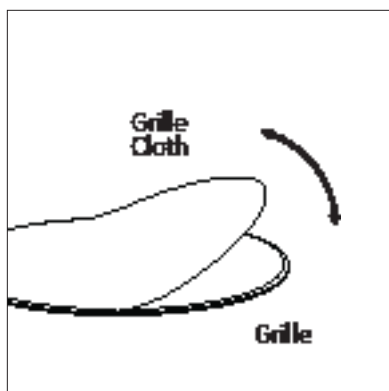
## **NO CONNECTOR** (equals to two 10-ohm connections):

When no connector is used (i.e. remove the pre-installed pair of Type A connector), the sub will have two 10-ohm connections. This will work to pass through other speakers in line, all off the same amplifier. See Section 8 on page 11 for this method.



## **6j. Painting the Grille**

In some situations the speakers may look better if the color matched the walls, ceiling, or trim in the room. This can be accomplished by painting the grille. The grille must be painted with spray paint, and most hardware stores will mix a can of paint to match whatever color you need. Before painting, carefully remove the thin cloth on the underside of the grille. Lightly spray the front of the grille with the paint from a distance, being careful not to plug any of the holes. Diluting the paint with paint thinner will lessen the risk of filling any holes. If a hole gets plugged use a can of compressed air to open it. Once the paint is dry, put the cloth back on the grille.



## **6k. Installing the Grille**

Fit the grille over the speaker. The grille uses magnets to be held in place.



## 7. Troubleshooting

If possible, it's often good to try to isolate the problem first. For example, if you're playing a DVD on a television and there's no sound, try connecting an MP3 player to the system to see if that works. If it does work, then the problem is with the television, DVD player, or the cables connecting them. If it doesn't work, the problem will be with the amplifier, speakers, or those cables.

Problem	Possible Cause
<b>No Sound</b>	The volume may be turned down or muted. Check the volume settings on both the amplifier and the television/computer/CD player/etc.
<b>No Sound</b>	Make sure the proper source is selected on the amplifier or receiver.
<b>No Sound</b>	Check the cord connecting the amplifier with the source. The cord may be damaged or plugged into the wrong input or output.
<b>No Sound</b>	Check the wires connecting the amplifier with the speakers. Make sure they're connected properly and not damaged in any way.
<b>Poor Sound Quality</b>	If you hear something like static, or the sound is cutting in and out, check the audio cables. If the problem increases when a cable is being moved, then the cable is most likely faulty or not connected properly.
<b>Poor Sound Quality</b>	Today's audio systems may have several places to adjust the volume, for example your MP3 player may have a volume control, and your amplifier may also have one. Check to be certain that the volume isn't turned up past 80% on any device.
<b>Poor Sound Quality</b>	Try changing sources to be certain that the selection you've chosen is a good quality recording.

## **8. Technical Assistance**

If you have any questions or concerns about installing or using this product, you can reach us through one of the following methods:

**Phone: (844) 674-4461**

**Hours of operation: 8:00am - 5:00pm (Pacific Time), Mon - Fri**

**Email: [sales@originacoustics.com](mailto:sales@originacoustics.com)**

If you are having technical trouble, please include the model number and briefly explain what steps you took to resolve the problem in your email, or be prepared to answer these questions over the phone. If you are considering returning the product, it's required that you contact Origin Acoustics prior to any return attempts. This way we can determine if the issue can be resolved without returning the product, or if needed we can provide instructions and support for the return process.

## **9. Limited Lifetime Warranty**

Origin Acoustics warrants to the original retail purchaser only that this Origin Acoustics product will be free from defects in materials and workmanship, provided the speaker was purchased from an Origin Acoustics authorized dealer.

If the product is determined to be defective, it will be repaired or replaced at Origin Acoustics' discretion. If the product must be replaced yet it is no longer manufactured, it will be replaced with a model of equal to or greater value that is the most similar to the original. If this is the case, installing the replacement model may require mounting modifications; Origin Acoustics will not be responsible for any such related costs.

### **• Requirements & Warranty Coverage**

This warranty may not be valid if the product was purchased through an unauthorized dealer. This warranty only applies to the individual that made the original purchase, and it cannot be applied to other purchases. The purchaser must be prepared to provide proof of purchase (receipt). This warranty will not be valid if the identifying number or serial number has been removed, defaced, or altered.

**\*All warranties and warranty conditions are subject to change. Please refer to**

**[www.originacoustics.com](http://www.originacoustics.com) for the latest information.**

## • **Not Covered by Warranty**

- Accidental damage
- Damage caused by abuse or misuse
- Damage caused by attempted repairs/modifications by anyone other than Origin Acoustics or an authorized dealer
- Damage caused by improper installation
- Normal wear, maintenance, and environmental issues
- Damage caused by voltage inputs in excess of the rated maximum of the unit
- Damage inflicted during the return shipment

## **10. Return Process**

Before making any return attempts, it is required that you first contact Origin Acoustics. Return product to Origin Acoustics or your dealer, either in person or by mail. It's preferable if the product is returned in the original packaging. If this isn't possible, the customer is responsible for insuring the shipment for the full value of the product.

This warranty is in lieu of all other expressed or implied warranties. Some states do not allow limitations on implied warranties, so this may not apply depending on the customer's location. (For more information, see Magnuson-Moss Warranty Act.)



01-20-25

6975 S Decatur Blvd, Las Vegas, NV 89118 • [www.originacoustics.com](http://www.originacoustics.com) • 844-674-4461

©2025 Origin Acoustics. All copyrighted, trademarked and patented elements mentioned herein are the sole property of Origin Acoustics.