



IN-CEILING 6" BAND-PASS SUBWOOFERS

OVERVIEW

A minimal-aesthetic fully distributed in-ceiling audio system engineered to provide deep ample bass and even sound coverage from a port-tuned box subwoofer and an arrangement of in-ceiling speakers in multiple finishes to mimic the appearance of stylish recessed lighting.

We specialize in producing niche products that are required to create stunning architectural audio installations. Our in-wall and in-ceiling subwoofers are part of those solutions, practically invisible hidden behind drywall and still punchy and deep for when the time is right.

PRODUCT ID



DSUB6F68K



DSUB6F65K



DSUB6F63K

CLEAN, POWERFUL BASS

Only audible worthy bass frequencies pass through the port of the DSUB6 from the bandpass to deliver a powerful listening experience. This ensures power is strictly utilized in creating the true fidelity low-end output.



IN-CEILING 6" BAND-PASS SUBWOOFERS

DUELING EFFORT

Two high-density aluminum woofers sit across from one another inside of the subwoofer enclosure. As a result, the output is enhanced while distortion and cabinet vibrations are significantly reduced.

MULTI-FINISH OPTIONS

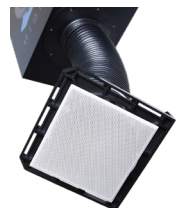
The DSUB6 comes with magnetic bezel-less grilles in both square and round finishes to match perfectly with designer recessed lighting.

PAINTABLE LOW PROFILE GRILLE

As expected with all Origin Acoustics speakers, the DSUB6 delivers high performance audio while remaining completely concealed from plain sight with a sleek paintable bezel-less magnetic grille.

PASSIVE CROSSOVER

The DSUB6 contains a thorough passive crossover that maintains low frequency response while passing off the appropriate mid and high frequencies to the surrounding D38 satellites.



IN-CEILING 6" BAND-PASS SUBWOOFERS



SPECIFICATIONS	DSUB6F68K	DSUB6F5K	DSUB6F3K
Part	DSUB6F680	DSUBF500	DSUB6F300
Woofer	Dual 6 1/2" (165mm) Polypropylene	Dual 6 1/2" (165mm) Polypropylene	Dual 6 1/2" (165mm) Polypropylene
Frequency Response	33Hz-150Hz	33Hz-150Hz	33Hz-150Hz
Power Handling	100-250 Watts	100-250 Watts	250 Watts
Impedance	5 ohm/10 ohm/20 ohm	5 ohm/10 ohm/20 ohm	5 ohm/10 ohm/20 ohm
Dimensions	7 7/8" x 11 7/8" x 19" (200 x 300 x 480mm)	7 7/8" x 11 7/8" x 19" (200 x 300 x 480mm)	7 7/8" x 11 7/8" x 19" (200 x 300 x 480mm)
Cutout Diameter	8 3/4" (222mm)	5 7/8" (149mm)	3 1/4" (83mm)
Grille Diameter	10" (254mm)	7 3/16" (183mm)	4 1/4" (109mm)
Mounting Depth	7 7/8" (200mm)	7 7/8" (200mm)	7 7/8" (200mm)

Note: The 19" (480mm) length dimension includes additional 1" space on each side to accommodate connecting wires to the DSUB6 terminals, and port flange.

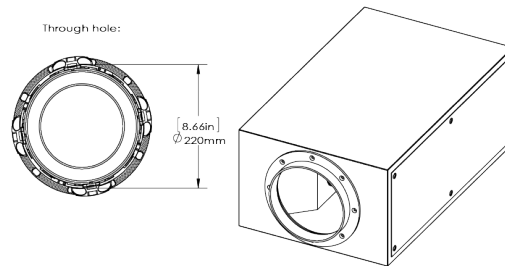
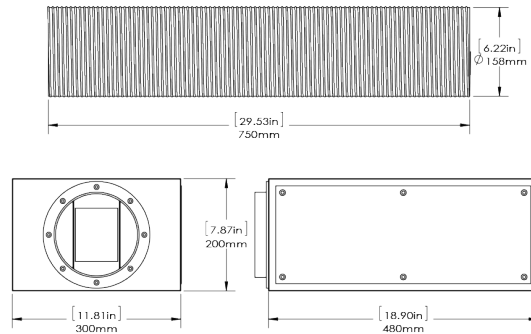


Please visit docs.originacoustics.com or scan the QR code using your smart device for the most up to date specifications and use instructions for this product. Products may only be purchased through an authorized integration partner.

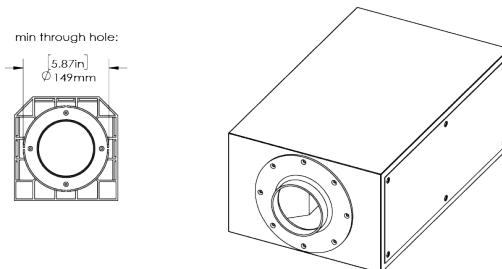
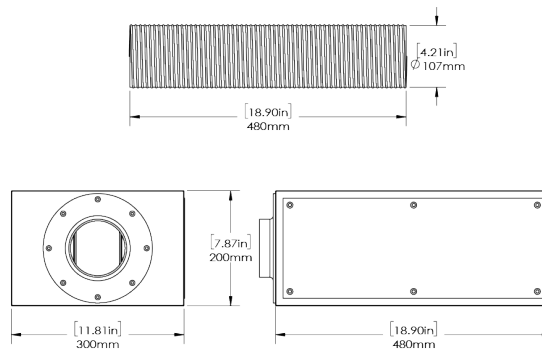
IN-CEILING 6" BAND-PASS SUBWOOFERS



LINE DRAWINGS



DSUB6F68K



DSUB6F5K

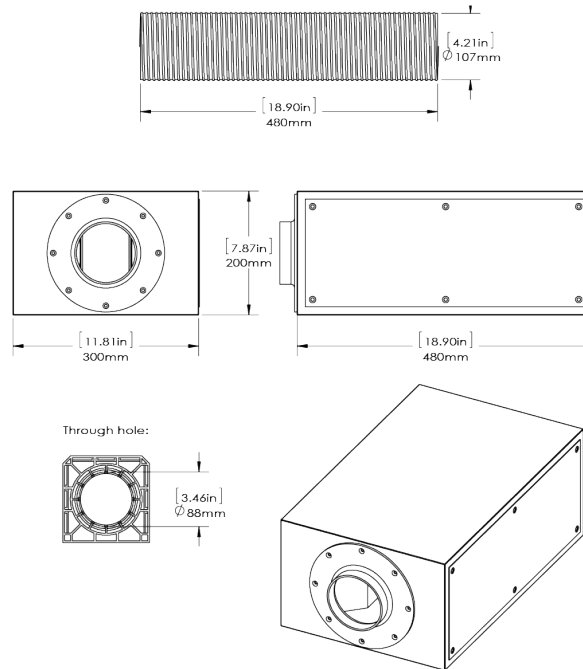


Please visit docs.originacoustics.com or scan the QR code using your smart device for the most up to date specifications and use instructions for this product. Products may only be purchased through an authorized integration partner.

IN-CEILING 6" BAND-PASS SUBWOOFERS



LINE DRAWINGS



DSUB6F3K



Please visit docs.originacoustics.com or scan the QR code using your smart device for the most up to date specifications and use instructions for this product. Products may only be purchased through an authorized integration partner.