



# SINGLE-ZONE WALL CONTROLLER FOR

## PROA1200 | PROA1000 PROA250 | PROA125

### PROFESSIONAL AMPLIFIER SERIES



## PROZCB | PROZCW

### INSTALLATION MANUAL

*Please visit [www.originpro.com](http://www.originpro.com) or scan the QR code using your smart device for the most up to date safety information and use instructions for this product.*



Please read the following important technical, safety and environmental notices in this guide before installing or using the wall controller product.

## **Technical & Safety Notices**

1. Store this document in a safe place for future reference.
2. This product is intended for installation by professional installers only.
3. This document is intended to provide professional installers with product installation, configuration, and safety guidelines for this product in typical fixed-installation systems.
4. Please read this document and all safety warnings before attempting installation.
5. Please note that this product does NOT include the in-wall mounting electrical box and installation screws required to install the controller.
6. Use a commercially available in-wall mounting electrical box and installation screws suitable for the specific wall material and installation situation.
7. This product must be installed in accordance with local, state, federal and industry regulations. It is the installer's responsibility to ensure installation is performed in accordance with all applicable codes, including local building codes and regulations. Consult the local authority having jurisdiction before installing this product.
8. Do not mount the product in locations where condensation may occur.
9. To reduce the risk of fire or electrical shock, do NOT expose this product to rain, liquids or moisture.
10. This product is not intended for installation or use in indoor water facility areas (including, without limitation, indoor pools, indoor water parks, hot tub rooms, saunas, steam rooms and indoor skating rinks).
11. Keep the product away from fire and heat sources.
12. Do NOT place naked flame sources, such as lighted candles, on or near the product.
13. Do NOT make unauthorized alterations to this product.

## **FOR PRODUCT USE IN EUROPE**

### Information to the User

This product complies with the European Directives request and the other Commission Regulations.

## **FOR PRODUCT USE IN THE USA**



### Information to the User

This device complies with part 15 of the FCC Rules.

Operation is subject to the following two conditions:

- (1) This device may not cause harmful interference, and
- (2) this device must accept any interference received, including interference that may cause undesired operation.

This equipment has been tested and found to comply with the limits for a Class B digital device, pursuant to part 15 of the FCC Rules. These limits are designed to provide reasonable protection against harmful interference when the equipment is operated in a residential installation. This equipment generates, uses, and can radiate radio frequency energy and, if not installed and used in accordance with the instruction manual, may cause harmful interference to radio communications. However, there is no guarantee that interference will not occur in a particular installation.

Changes or modifications to this equipment not expressly approved by Origin PRO for compliance could void the user's authority to operate this equipment.

## **POUR LES CLIENTS AU CANADA**



### Informations à l'utilisateur Origin PRO

CAN ICES-003 (B)/NMB-003(B)

Cet appareil est conforme à la partie 15 de la réglementation de la FCC. Son fonctionnement repose sur les deux conditions suivantes: (1) cet appareil ne doit pas provoquer d'interférences et (2) cet appareil doit tolérer les interférences externes, y compris celles qui peuvent provoquer un fonctionnement anormal.

Ce matériel a fait l'objet de tests prouvant sa conformité aux limites imposées aux appareils numériques de classe B, conformément à la partie 15 des réglementations de la FCC. Ces limites sont conçues pour fournir une protection raisonnable contre les interférences nuisibles lorsque

l'équipement est utilisé dans une installation résidentielle. Cet équipement génère, utilise et peut émettre de l'énergie de radiofréquence et, s'il n'est pas installé et utilisé conformément au manuel d'instructions, peut causer des interférences nuisibles aux communications radio.

Cependant, il n'y a aucune garantie que des interférences ne se produiront pas dans une installation particulière.

Toute modification non autorisée expressément par Blaze Audio est susceptible d'annuler le droit de l'utilisateur à utiliser cet appareil.

## **Important Safety Instructions**

1. Read these instructions.
2. Keep these instructions.
3. Heed all warnings.
4. Follow all instructions.
5. Do not use this apparatus near water.
6. Do not submerge the equipment in water or liquids.
7. Do not use any aerosol spray, cleaner, disinfectant or fumigant on, near or into the equipment.
8. Clean only with a dry cloth.
9. Do not block any ventilation opening. Install in accordance with the manufacturer's instructions.
10. Do not install near any heat sources such as radiators, heat registers, stoves, or other apparatus (including amplifiers) that produce heat.
11. To reduce the risk of electrical shock, the power cord shall be connected to a mains socket outlet with a protective earthing connection.
12. Do not defeat the safety purpose of the polarized or grounding type plug. A polarized plug has two blades with one wider than the other. A grounding type plug has two blades and a third grounding prong. The wide blade or the third prong are provided for your safety. If the provided plug does not fit into your outlet, consult an electrician for replacement of the obsolete outlet.
13. Protect the power cord from being walked on or pinched particularly at plugs, convenience receptacles, and the point where they exit from the apparatus.
14. Do not unplug the unit by pulling on the cord, use the plug.
15. Only use attachments/accessories specified by the manufacturer.
16. Unplug this apparatus during lightning storms or when unused for long periods of time.
17. Refer all servicing to qualified service personnel. Servicing is required when the apparatus has been damaged in any way, such as power supply cord or plug is damaged, liquid has been spilled or objects have fallen into the apparatus, the apparatus has been exposed to rain or moisture, does not operate normally, or has been dropped.
18. The appliance coupler, or the AC Mains plug, is the AC mains disconnect device and shall remain readily accessible after installation.
19. Adhere to all applicable, local codes.
20. Consult a licensed, professional engineer when any doubt or questions arise regarding a physical equipment installation.

## **Environmental Statement**

This product complies with international directives, including but not limited to the Restriction of Hazardous Substances (RoHS) in electrical and electronic equipment, the Registration, Evaluation, Authorization and restriction of Chemicals (REACH) and the disposal of Waste Electrical and Electronic Equipment (WEEE). Consult your local waste disposal authority for guidance on how properly to recycle or dispose of this product.



# **CONTENTS**

This manual is divided into sections covering the following topics:

<b>1. INTRODUCTION</b>	<b>1</b>
<b>2. DEVICE OVERVIEW</b>	<b>2</b>
<b>3. DEVICE CONNECTIONS</b>	<b>3</b>
<b>4. DEVICE MOUNTING</b>	<b>4</b>
<b>5. DEVICE OPERATION</b>	<b>6</b>
<b>6. DEVICE USER INTERFACE CONFIGURATION</b>	<b>8</b>
<b>7. AMPLIFIER CONFIGURATION: ON AND OFF SETTING</b>	<b>16</b>
<b>8. AMPLIFIER CONFIGURATION: CUSTOMIZED SETTINGS</b>	<b>18</b>
<b>9. DEVICE RESET</b>	<b>35</b>
<b>10. SPECIFICATIONS</b>	<b>37</b>
<b>11. TECHNICAL ASSISTANCE</b>	<b>38</b>
<b>12. LIMITED 2 YEAR WARRANTY</b>	<b>39</b>
<b>13. RETURN PROCESS</b>	<b>39</b>

# 1. INTRODUCTION

Thank you for purchasing the PROZCB | PROZCW Wall Controller for our Origin PRO ProA amplifier series.

Please read this manual fully before installing and using the product.

Origin PRO ProA amplifiers have been designed to provide configurable, consistent and reliable high performance audio power amplification for residential, commercial and entertainment applications, and this PROZCB | PROZCW is a wall-mounted controller specifically designed to remotely manage the volume level and input source selection, of the Origin PRO ProA amplifier.

This instruction booklet covers the necessary information for a smooth installation, including step-by-step instructions for installation, troubleshooting tips for any errors that may occur, and all warranty information.

We pride ourselves upon offering products with excellent sound quality, longevity, and a simple installation process.

If for any reason you experience problems, or if you have installation questions, please call us at **(844) 674-4461**. Hours of operation are 8:00am to 5:00pm (Pacific Time), Monday through Friday.

## 2. DEVICE OVERVIEW

Each PROZCB | PROZCW Wall Controller device is only compatible with an Origin PRO amplifier running **firmware version 1.6.1 or later**. This manual refers to Wall Controller **firmware version 1.6.1**.

Check to make sure that the correct firmware is installed on the Origin PRO ProA amplifier, **before** attempting to install and configure the PROZCB | PROZCW Wall Controller. Also make sure that the device is supplied power, with the use of a standard PoE Switch (or PoE injector) and Cat5 cable (or above), as the wall controller is not self-powered.

The firmware installed in the amplifier can be identified and updated by selecting the **Device** option in the: **Origin PRO Amplifier Web App: Settings Menu**.

The firmware version can be checked, and correct firmware downloaded from:

**[www.originpro.com](http://www.originpro.com)**.

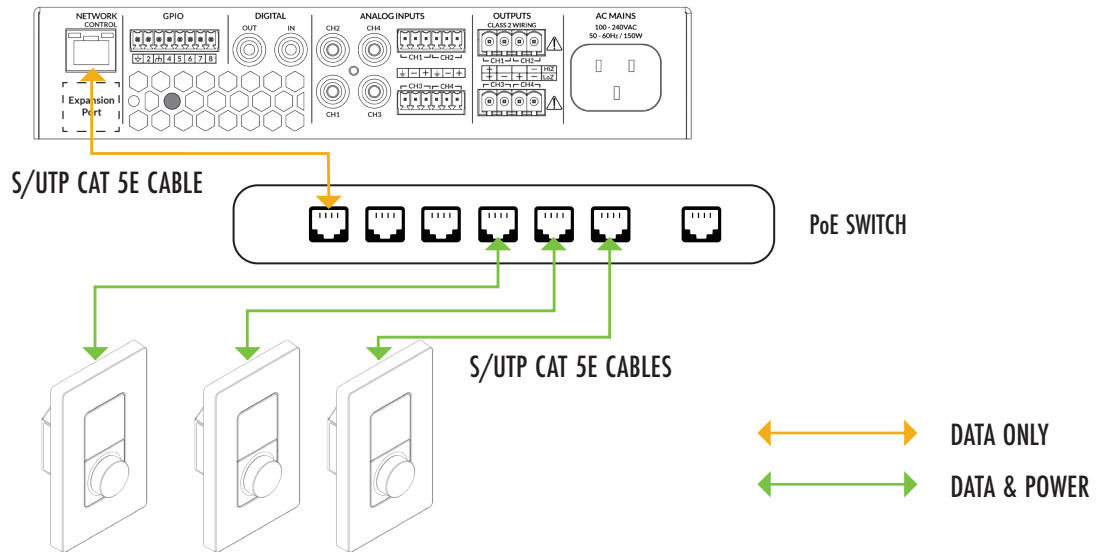
Each PROZCB | PROZCW Wall Controller device had been designed to control one zone only. For example, to remotely control three (3) zones, would require three (3) devices, and to remotely control four (4) zones, would require four (4) devices, etc.

- It is also possible to assign MORE than one (1) PROZCB | PROZCW Wall Controllers to a single zone.
- However it is **ONLY** recommended to connect a **MAXIMUM** of eight (8) PROZCB | PROZCW Wall Controller devices per Origin PRO ProA amplifier.

**NOTE:** The PROZCB | PROZCW Wall Controller is not compatible with any amplifiers of third parties under another brand, or any other series outside of the Origin PRO ProA125 - ProA250 Series or ProA1000 - ProA1200 Series amplifiers.

### 3. DEVICE CONNECTIONS

Refer to the illustration below, which shows how to connect multiple PROZCB | PROZCW Wall Controller devices to an Origin PRO ProA amplifier, using a standard PoE network switch and Cat5 cable.



## 4. DEVICE MOUNTING

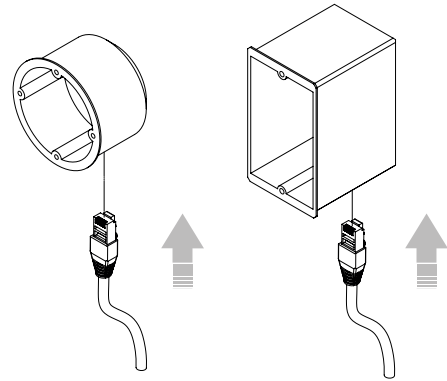
### 4A. DEVICE MOUNTING OVERVIEW

**NOTE:** This product does NOT include the in-wall mounting electrical box and installation screws required to install the controller.

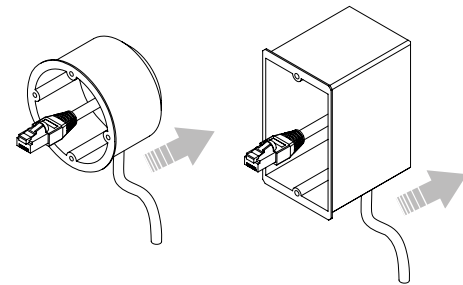
Please, use a commercially available in-wall mounting electrical box and installation screws suitable for the specific wall material and installation situation.

### 4B. DEVICE MOUNTING STEPS

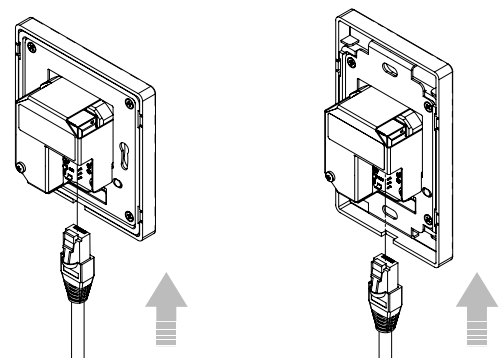
1. Feed the Ethernet cable through the electrical box.



2. Mount the electrical box into the wall.

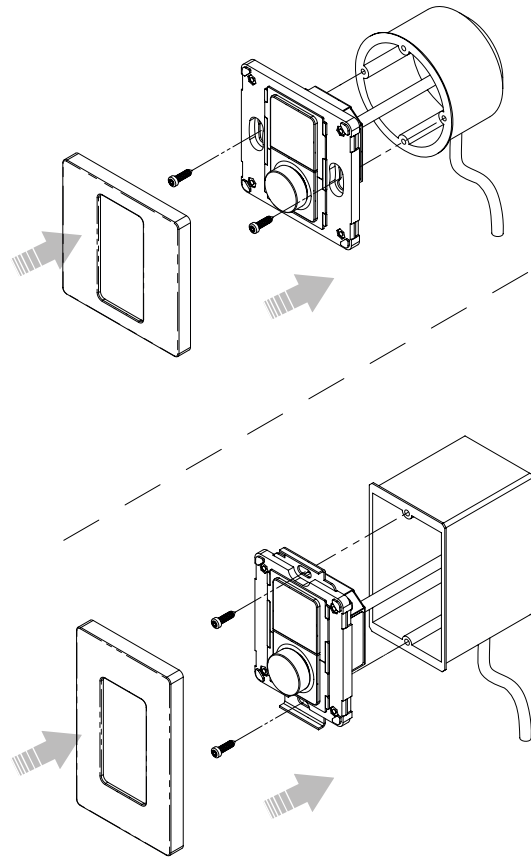


3. Connect the Ethernet cable to the PROZCB | PROZCW Wall Controller.





4. Click off the front panel, to be able to screw the PROZCB | PROZCW Wall Controller unit into the electrical box. Then re-attach the front panel onto the face and ensure it clicks correctly into place.



## 5. DEVICE OPERATION

### 5A. DEVICE OPERATION STEPS

To make each device configuration a quick task, the PROZCB | PROZCW Wall Controller offers a simple and intuitive interface, with all options/functions accessed and selected via a tactile rotary encoder dial.

After installing and configuring the device, all of the device's functions can be accessed and selected via this rotary encoder dial. All setting options or information will be clearly visible via the high-resolution color display screen.

• **Note:** *The dial was designed to offer a highly sensitive interface, for a seamless user experience with easy menu navigation and quick unit adjustments:*

• **By rotating the encoder dial, there is a tactile change felt, according to the units on the selection screen, allowing a subtle 'CLICKING' sensation to be felt from the dial through the fingers. This ensures clear navigation through the menu and setting adjustments.**



• **When the rotary encoder dial is pressed and released, the user will both feel and hear a “CLICK” – to confirm each the action within the user interface.**



## 5B. DEVICE OPERATION STEPS CONTINUED

The three main functions offered by the device are outlined below.

### **1. Turn the dial to adjust volume and navigate menu options.**



- Turn the dial to the left (anticlockwise) to turn the volume down, and turn it to the right (clockwise) to turn the volume up.

### **2. Tap the rotary encoder to select and change the input source.**



- To switch between input sources: first tap the dial, then turn the dial to view the input sources available, and then confirm the desired choice by tapping the dial once more.

### **3. Press and hold the dial to access the settings menu.**



- NOTE: Access to the settings menu can be restricted by setting an optional PIN code protection – this can be configured and activated within the Origin PRO Web App settings.

## 6. DEVICE USER INTERFACE SETUP

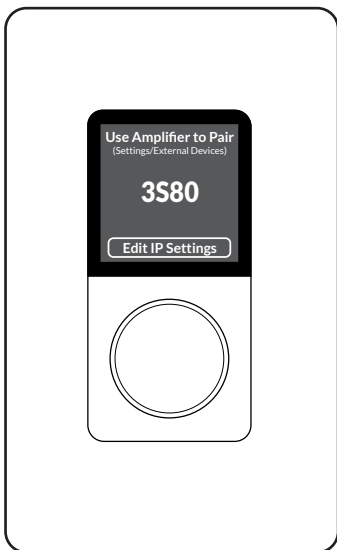
**NOTE:** When connecting multiple PROZCB | PROZCW Wall Controller devices to a single amplifier, we recommend completing all stages of the setup process, before connecting and configuring a subsequent device.

### STEP A: START UP DEVICE

Once the PROZCB | PROZCW Wall Controller device is connected via the Ethernet cable, and is receiving power, the device will power up to display the Origin PRO logo for a few seconds. Then, the Origin PRO logo will disappear and be replaced by the setup screen. The setup screen will display the following:

- **DEVICE PAIRING CODE**

- **OPTION TO CHANGE IP ADDRESS [“EDIT IP SETTINGS”]**



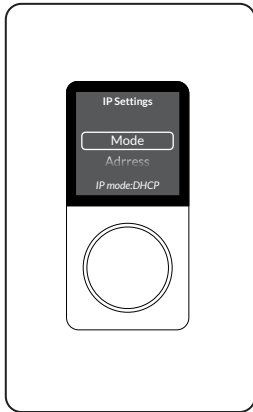
### STEP 2: EDIT THE DEVICE'S IP SETTING (IF REQUIRED)

**NOTE:** When the device is connected to an Origin PRO amplifier via a network router, the PROZCB | PROZCW Wall Controller device will be automatically assigned an IP address (dynamic DHCP) – this is the default setting, and in this situation, there is no need to edit the IP settings.

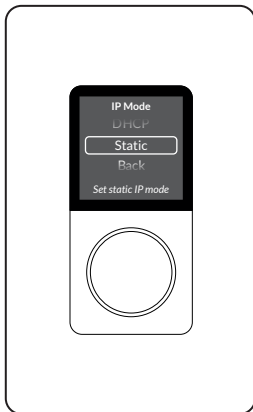
HOWEVER, if the device is connected to an Origin PRO amplifier via a NETWORK SWITCH, you must edit the IP settings to STATIC IP. On initial set-up, this can only be done via the device itself and is performed by following the steps outlined below.

1. TAP the rotary encoder to confirm the action to **“EDIT IP SETTINGS”**
2. On the display you will be presented with a set of options.

TURN the rotary encoder ONE CLICK to the LEFT (ANTICLOCKWISE) and TAP the rotary encoder to confirm the selection of the option labeled **“MODE”**.



3. TAP the rotary encoder to confirm the selection of the option labeled **“STATIC”**.



4. You will be automatically returned to the previous menu.

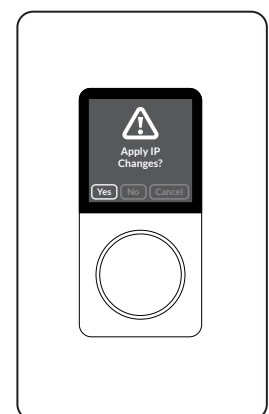
**IMPORTANT- Jump to #12 if this is NOT the first device you are connecting to the same Origin PRO amplifier!**

5. TURN the rotary encoder 4 CLICKS to the RIGHT (CLOCKWISE) to navigate to the option labeled **“BACK”**.

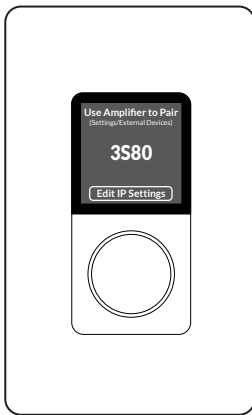
6. TAP the rotary encoder to confirm the selection of the option **“Back”**.

7. You will be presented with the question **“APPLY IP CHANGES?”**

8. TAP the rotary encoder to confirm the selection of the option labeled **“YES”**



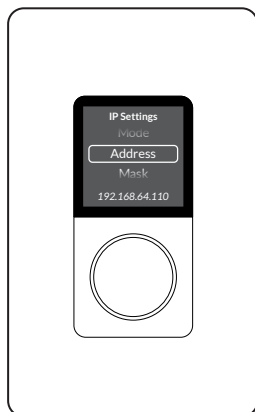
9. Now the display will present the exact same display as at the beginning of the process, showing a pairing code – like that shown in the image below.



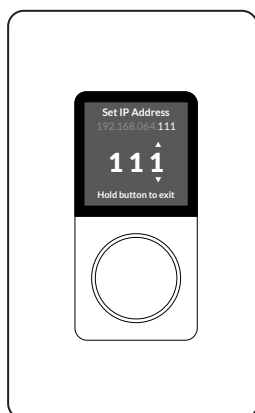
10. You have now completed the necessary steps for editing the IP settings required, when configuring the first device to be connected to the amplifier.

**IMPORTANT:** When connecting **MORE** than 1 device to the same amplifier, additional steps, as described below, must be taken after #5 to ensure each device has a unique IP address.

11. TURN the rotary encoder one click to the RIGHT (CLOCKWISE) and TAP the rotary encoder to confirm the selection of the option labeled **“ADDRESS”**.



12. TAP the rotary encoder multiple times ***until the last digit of the IP address is selected.***



13. TURN the rotary encoder RIGHT (CLOCKWISE) **to change the final digit of the IP address for this device – so it is not matching those of any other device also linked to the same amplifier.** (e.g. for the second device change the final digit to #2, for the second device change the final digit to #3, etc).

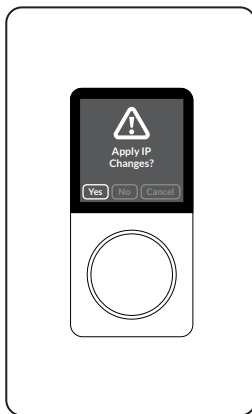
14. TAP the rotary encoder to confirm the change and EXIT (as advised on the screen).

15. TURN the rotary encoder 3 CLICKS to the RIGHT (CLOCKWISE) to navigate to the option labeled **“BACK”**.

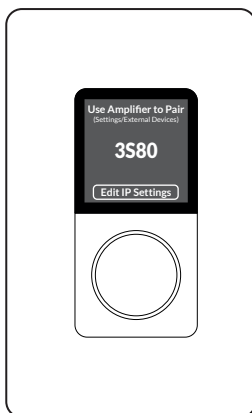
16. PUSH the rotary encoder to confirm the selection of the option **“BACK”**.

17. You will be presented with the question **“APPLY IP CHANGES?”**

18. TURN the rotary encoder one click to the LEFT (ANTICLOCKWISE) and TAP the rotary encoder to confirm the selection of the option labeled **“YES”**.



19. You will now be presented with the exact same display as at the beginning, showing a pairing code.



20. You have now completed the necessary steps for editing the IP settings required when configuring the second, third or further device to be connected to the amplifier.

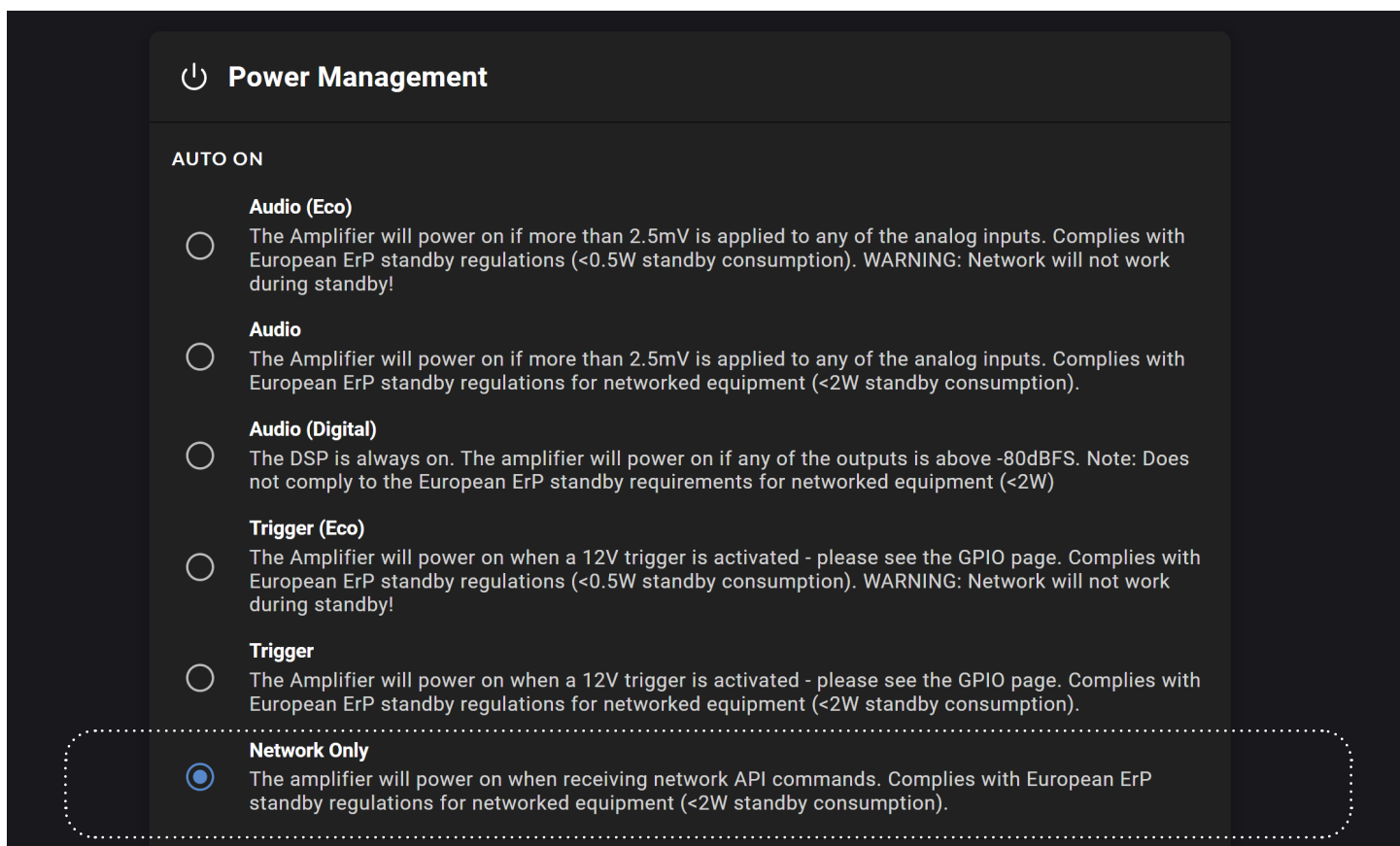
## STEP 3: CONNECT TO THE AMPLIFIER USING THE ORIGIN PRO WEB APP

Now connect the Origin ProA Amplifier via your phone, tablet or computer using the Origin PRO Web App. Refer to the quick start guide for the Origin ProA Amplifier, if you need a reminder on how to do this.

**IMPORTANT –AFTER CONNECTING TO THE AMPLIFIER, WE STRONGLY RECOMMEND CHANGING THE POWER MANAGEMENT SETTING TO "NETWORK ONLY".**

*There are two main reasons for this recommendation:*

- *The default setting labeled "Audio" can potentially block the (optional) function of being able to successfully power down the amplifier directly from the wall controller.*
- *Setting Power Management to one of the Eco modes ["Audio (Eco)" or "Trigger (Eco)"] is also not recommended, as under these settings the amplifier can easily lose connection with the networked devices.*





IMPORTANT - IF ACCESSING THE WEB APP BY CONNECTING TO THE AMPLIFIER VIA A WIRED (ETHERNET) NETWORK CONNECTION, WE STRONGLY RECOMMEND CHANGING THE WIFI SETTINGS AS OUTLINED BELOW .

- Under the '**SETTINGS MENU**', go to '**WIFI**' settings and select the option "**DISABLE WIFI**" when LAN connected. Then click "**APPLY**" in the upper right-hand corner. Making this adjustment to the WIFI settings will not only avoid any potential IP address conflict, but also better secure access to the amplifier and its networked devices.

**WIFI** APPLY

**ENABLE WIFI** ON

When WiFi is disabled the only way to connect to the amplifier is using the LAN port. The setting can be reset by pressing the Factory Reset button during startup or connecting via LAN and enabling WiFi again.

**WHEN LAN CONNECTED**

☒ **Disable WIFI**

☐ **Do Nothing**

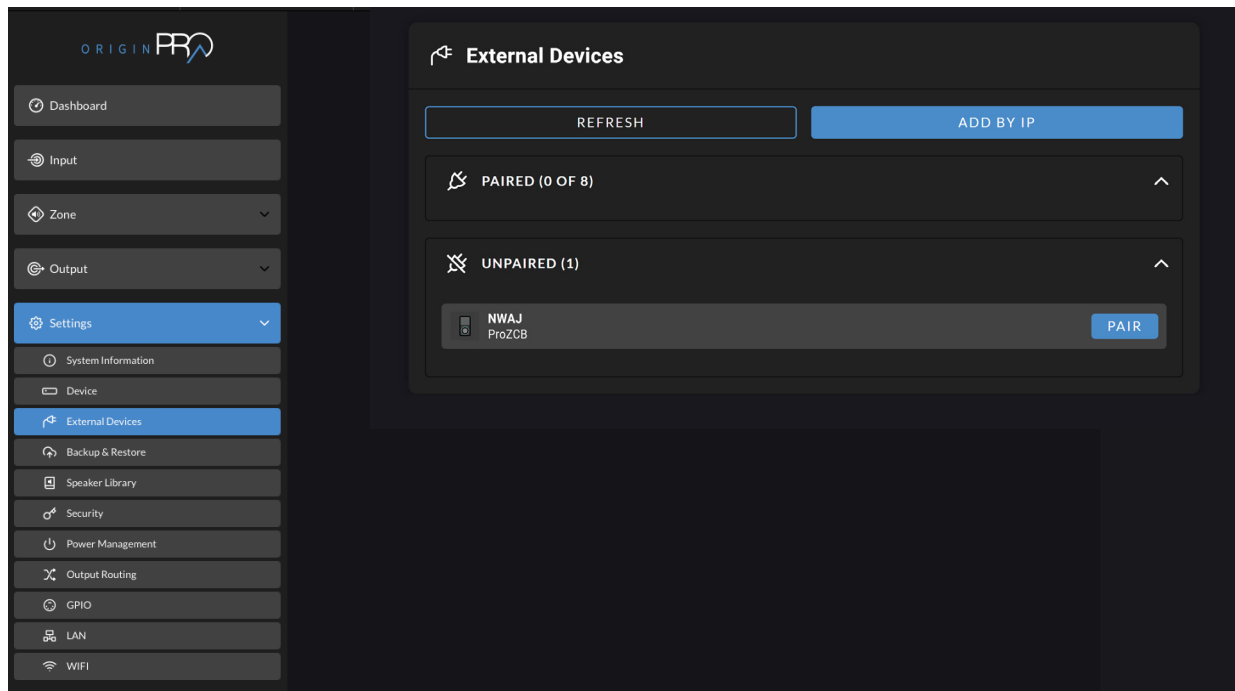
**DISABLE WIFI AFTER**

5 min 10 min 30 min **Always On**

If set to any other value than "Always On" - WiFi will be turned off after the selected duration. Amplifier will be need power cycling to turn WiFi on again.

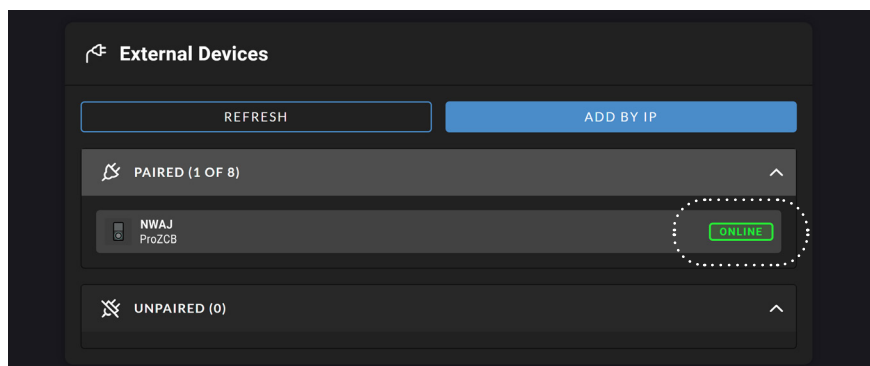
## STEP 4: PAIR THE DEVICE WITH THE AMPLIFIER

To pair the PROZCB | PROZCW Wall Controller with the Origin PRO ProA Amplifier, navigate to the menu **‘SETTINGS’> ‘EXTERNAL DEVICES’** in the Web App.



The PROZCB | PROZCW Wall Controller device you are configuring will be displayed under **‘UNPAIRED’** devices.

The device should be paired manually, by clicking the button labeled **“PAIR”** next to the respective PROZCB | PROZCW Wall Controller device. The process of pairing the PROZCB | PROZCW Wall Controller device with the Origin ProA Amplifier takes just a few seconds. Once pairing is successful, the device will be shown under **‘PAIRED DEVICES’** in the web app, and the green **“ONLINE”** icon will be displayed alongside it.

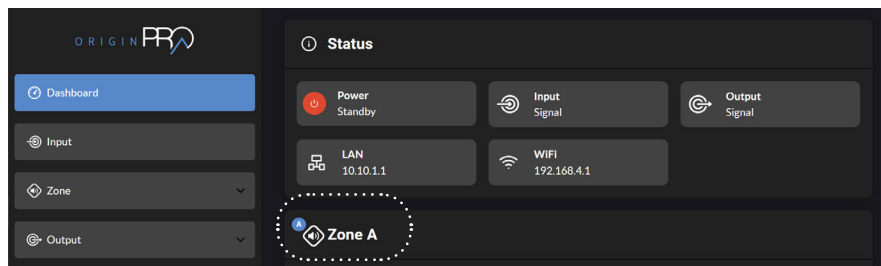


## STEP 5: SELECT THE AUDIO ZONE THE DEVICE IS INTENDED TO CONTROL

In the Origin PRO Web App, click on the device shown within the paired devices menu and navigate to the tab labeled **“GENERAL”**. Assign the device to a specific audio zone, selecting the desired zone from the drop-down menu (e.g., Zone A) that the device is intended to control.

You will see that the new name of the zone associated with the wall controller is instantly displayed at the top of screen of the PROZCB | PROZCW Wall Controller.

You will see that the new name of the zone associated with the wall controller is instantly displayed at the top of screen of the PROZCB | PROZCW Wall Controller.

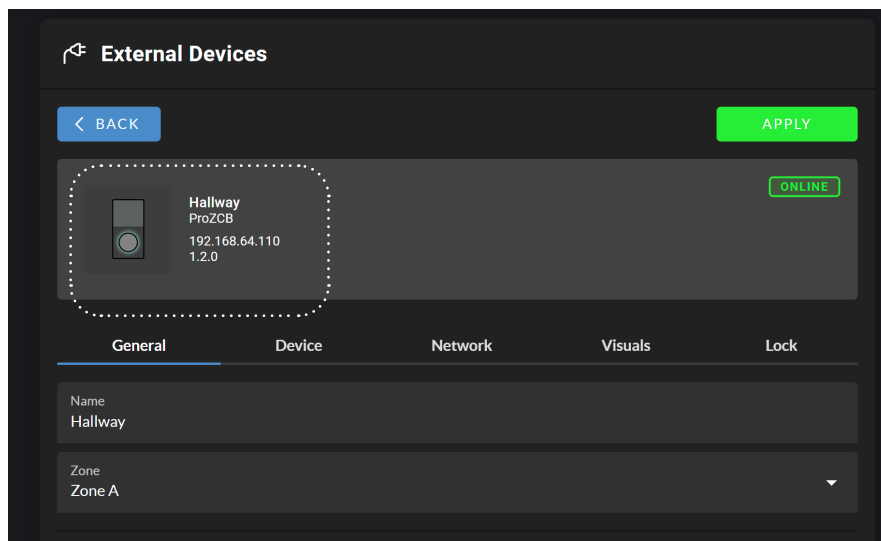


## STEP 6: NAME THE DEVICE

Under the tab labeled **“GENERAL”**, we recommend you type in a name for the device.

We recommend using a name that describes the device’s point of installation or usage (e.g., ‘Hallway’).

Click **“APPLY”** to activate the name change. The PROZCB | PROZCW Wall Controller is now configured and able to remotely control the volume and source input of the zone it is associated with Individual wall controller identification can be established by selecting the **FIND ME** option in the **‘SETTINGS’> ‘EXTERNAL DEVICES’** in the Web App. The display and rotary encoder illumination of the connected device will flash.



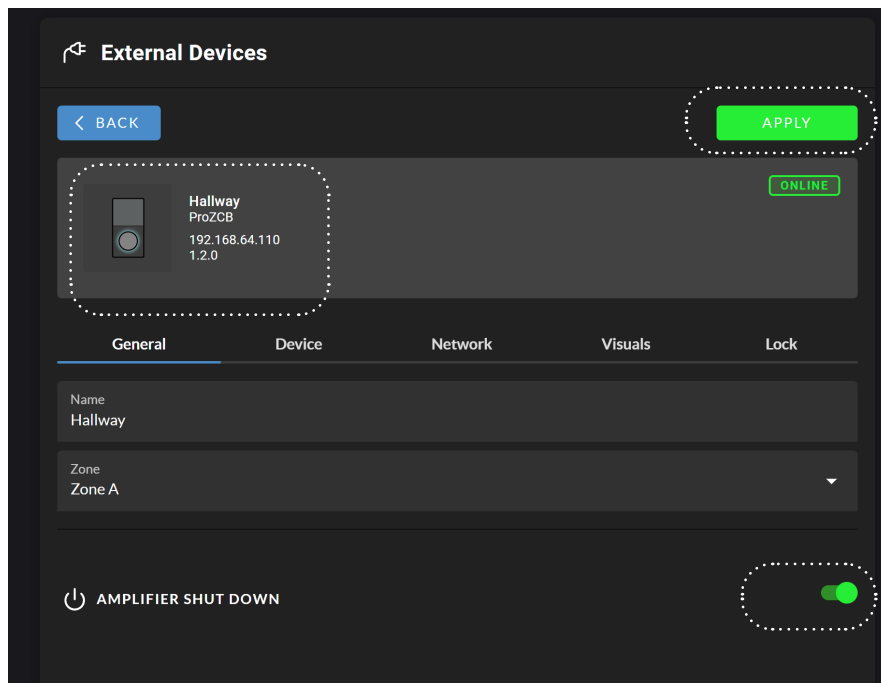
## 7. AMPLIFIER CONFIGURATION: ON AND OFF SETTINGS

### 7A. AMPLIFIER POWER ON/OFF FEATURE

You can power the amplifier both on and off, directly from the PROZCB | PROZCW Wall Controller. However, this function is not active by default, and so first needs to be activated within the settings of the device via the Origin PRO Web App.

Find under the tab labeled **“GENERAL”**, the option at the bottom, labeled **“AMPLIFIER SHUT DOWN”**. Then toggle switch to the right. Then, toggle the switch so it displays as **ACTIVE (GREEN)**. Next, click **“APPLY”** in the top right-hand corner, to activate this feature.

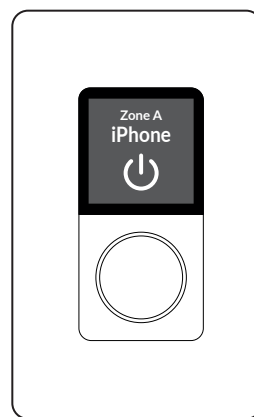
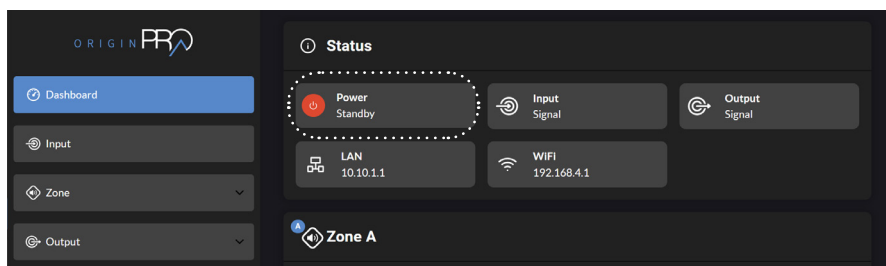
Once this feature has been activated, you will be able to power the amplifier on and off, directly from the PROZCB | PROZCW Wall Controller.



## 7B. TO TURN THE AMPLIFIER OFF (into standby mode), follow the steps outlined below.

1. PRESS AND HOLD the rotary encoder until the option **“POWER OFF AMP”** appears (shows below the setting menu when the feature is activated).
2. TAP the rotary encoder to confirm the selection of the option action **“POWER OFF AMP”**.
3. You will be presented with the question **“POWER DOWN AMPLIFIER?”**
4. TURN the rotary encoder to highlight the option **“YES”** and tap the rotary encoder to confirm the selection.

When the amplifier is in **STANDBY** power mode, it will be communicated via both the dashboard section of the Web App, and on the display screen of the PROZCB | PROZCW Wall Controller itself.



## 7C. TO TURN THE AMPLIFIER ON (back from standby mode), follow the steps outlined below.

1. TAP the rotary encoder.
2. You will be presented with the question

**“POWER UP AMPLIFIER?”**

3. Turn the rotary encoder to highlight the option **“YES”** and tap the rotary encoder to confirm the selection.

## 8. AMPLIFIER CONFIGURATION: CUSTOMIZED SETTINGS

### 1A. CUSTOMIZATION OF DISPLAY SCREEN BACKLIGHT: BRIGHTNESS

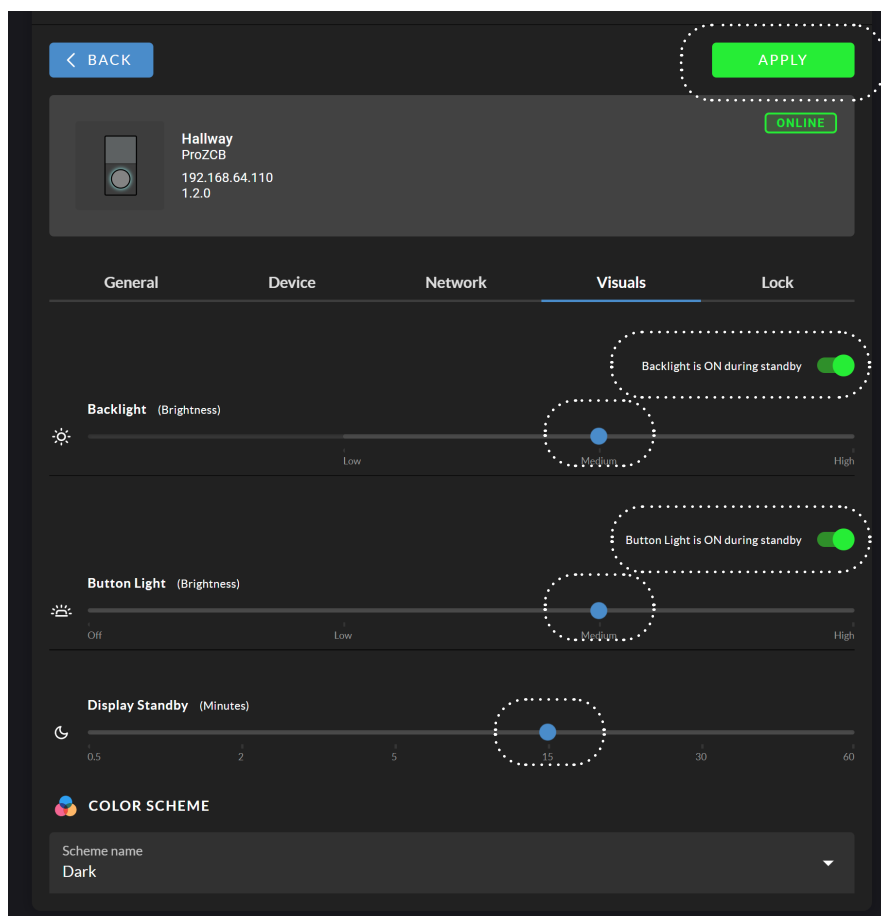
The high-resolution screen provides information and menu settings. Via the color LCD display, you will be able to clearly see:

- the zone the controller is associated with
- the audio source input that is selected
- the current volume level.

The intensity of brightness on the display screen's backlight can be adjusted to suit the user preference/environment. You can make this adjustment directly on the wall controller itself or change it within the Origin PRO Web App.

3 setting levels are possible:      • Low (least bright)                      • Medium                      • High (most bright)

Via the Origin PRO Web App: Click on the device shown within the paired devices menu and navigate to the tab labeled “Visuals”. Select the preferred brightness level and, then click the button labeled “APPLY” in the top righthand corner to activate the change.



Via the Settings Menu of the PROZCB | PROZCW Wall Controller: To change the intensity of the display screen's backlight via the wall controller, follow the steps outlined below:

1. PRESS AND HOLD the rotary encoder until the settings menu appears.
2. TAP the rotary encoder to confirm the selection of the **"SETTINGS"** menu.
3. TAP the rotary encoder to confirm the selection of the **"VISUALS"** menu.
4. TAP the rotary encoder to confirm the selection of the **"BACKLIGHT"** menu.
5. TURN the rotary encoder left and right to explore the options available, as shown on the screen.
6. TAP the rotary encoder to confirm the desired intensity of the display screen's backlight.
7. TURN the rotary encoder one click to the right (clockwise) to navigate to the option labeled **"BACK"**.
8. TAP the rotary encoder to confirm the selection of the option action **"BACK"**.
9. TURN the rotary encoder 2 clicks to the right (clockwise) to navigate to the option labeled **"BACK"**.
10. TAP the rotary encoder to confirm the selection of the option action **"BACK"**.
11. You will be presented with the question **"APPLY VISUAL CHANGES?"**
12. TURN the rotary encoder to highlight the option **"YES"** and tap the rotary encoder to confirm the selection.
13. TURN the rotary encoder 2 clicks to the right (clockwise) to navigate to the option labeled **"BACK"**.
14. TAP the rotary encoder to confirm the selection of the option action **"BACK"**.
15. You are now returned to the primary screen view displaying the zone, source input and volume level of the associated zone.

## 1B. CUSTOMIZATION OF DISPLAY SCREEN BACKLIGHT: ON STANDBY

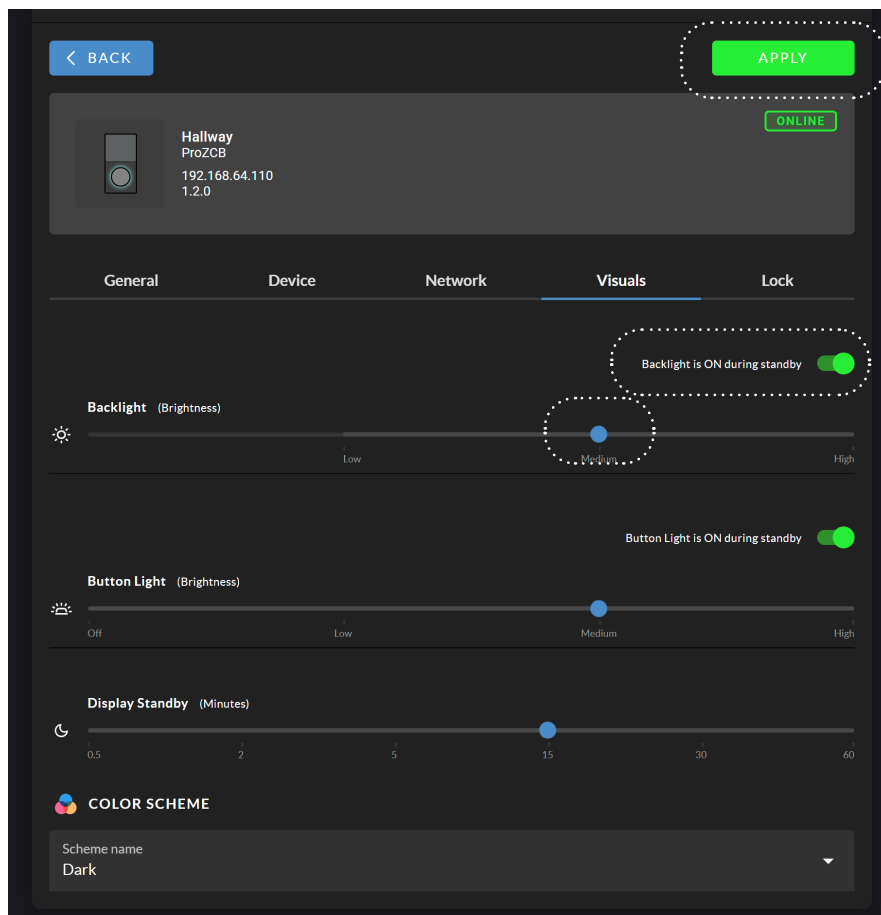
To provide an optimal user experience the backlight of the display can also be deactivated, when it is in standby mode.

This feature is best used when lighting conditions of the room change – e.g., from bright sunlight during the day to darker conditions in the evening, however, please note that when deactivated, the screen will appear completely blank to the user, and no longer communicates the zone, source input or volume level of the associated zone.

The adjustment can be made directly on the wall controller itself or changed within the PROZCB | PROZCW Wall Controller.

Via the Origin PRO Web App: First, find the **“VISUALS”** tab. Then, turn the toggle switch to the left – so the text **“BACKLIGHT IS OFF DURING STANDBY”** is displayed.

Next, click the button labeled **“APPLY”** in the top right-hand corner that will activate this feature.





Via the Settings Menu of the PROZCB | PROZCW Wall Controller: To apply the deactivation feature of the screen display while the display is in standby mode, please follow the steps outlined below.

1. PRESS and hold the rotary encoder until the settings menu appears.
2. TAP the rotary encoder to confirm the selection of the **“SETTINGS”** menu.
3. TAP the rotary encoder to confirm the selection of the **“VISUALS”** menu.
4. TAP the rotary encoder to confirm the selection of the **“BACKLIGHT”** menu.
5. TURN the rotary encoder one click to the left (anticlockwise) to navigate to the option labeled **“STANDBY”**.
6. TAP the rotary encoder to confirm the selection of the **“STANDBY”** menu.
7. TURN the rotary encoder left and right to toggle between the display standby options **“ON”** and **“OFF”**.
8. TAP the rotary encoder to confirm your preferred display standby setting (ON means display screen backlight remains on even when PROZCB | PROZCW Wall Controller device is in standby mode).
9. TURN the rotary encoder 2 CLICKS to the RIGHT (CLOCKWISE) to navigate to the option labeled **“Back”**.
10. TAP the rotary encoder to confirm the selection of the option action **“Back”**.
11. TURN the rotary encoder 2 CLICKS to the RIGHT (CLOCKWISE) to navigate to the option labeled “Back”.
12. TAP the rotary encoder to confirm the selection of the option action **“BACK”**.
13. You will be presented with the question **“APPLY VISUAL CHANGES?”**
14. TURN the rotary encoder to highlight the option **“YES”** and tap the rotary encoder to confirm the selection.
15. TURN the rotary encoder 2 clicks to the right (clockwise) to navigate to the option labeled **“BACK”**.
16. TAP the rotary encoder to confirm the selection of the option action **“BACK”**.
17. You are now returned to the primary screen view displaying the zone, source input and volume level of the associated zone.

## 2A. CUSTOMIZATION OF ROTARY ENCODER DIAL BACKLIGHT: BRIGHTNESS

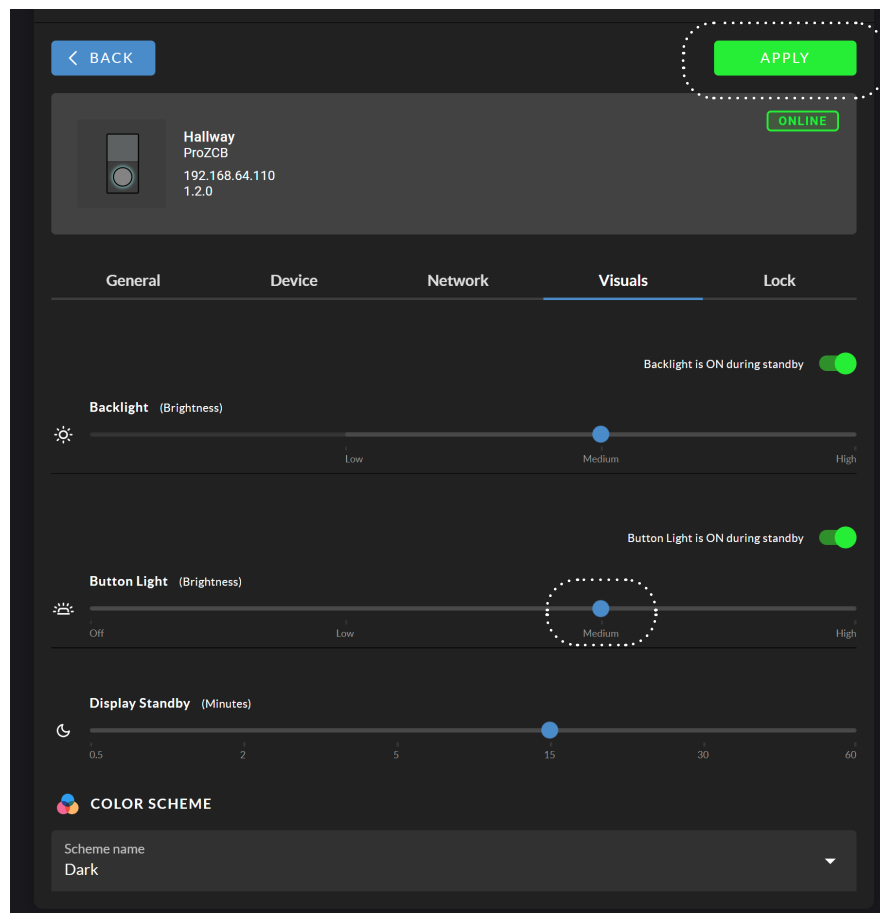
The intensity of the backlight behind the rotary encoder dial can be adjusted to suit the use environment and user preference. Four setting levels are possible:

- Off (no light)
- Low (least bright)
- Medium
- High (most bright)

The adjustment can be made directly on the wall controller itself or changed within the Web App.

Via the Origin PRO Web App: The intensity of rotary encoder dial backlight can be quickly changed via the slider located in the center of the **“VISUALS”** tab.

Simply choose the preferred brightness level and, then click the button labeled **“APPLY”** in the top right-hand corner to activate the change.



Via the Settings Menu of the PROZCB | PROZCW Wall Controller: To change the intensity of the backlight behind the rotary encoder dial via the PROZCB | PROZCW Wall Controller device, simply follow the steps outlined below.

1. PRESS AND HOLD the rotary encoder until the settings menu appears.
2. TAP the rotary encoder to confirm the selection of the **“SETTINGS”** menu.
3. TAP the rotary encoder to confirm the selection of the **“VISUALS”** menu.
4. TURN the rotary encoder one click to the right (clockwise) and tap the rotary encoder to confirm the selection of the option labeled **“BUTTON LIGHT”**.
5. TAP the rotary encoder to confirm the selection of the option labeled **“BRIGHTNESS”**.
6. TAP the rotary encoder to confirm the selection of the **“BRIGHTNESS”** menu.
7. TURN the rotary encoder left and right to toggle between the four options **“OFF”**; **“LOW”**; **“MID”**; **“HIGH”**.
8. TAP the rotary encoder to confirm your preferred setting.
9. TURN the rotary encoder 1 click to the RIGHT (CLOCKWISE) to navigate to the option labeled **“BACK”**.
10. TAP the rotary encoder to confirm the selection of the option action **“BACK”**.
11. TURN the rotary encoder 1 click to the RIGHT (CLOCKWISE) to navigate to the option labeled **“BACK”**.
12. TAP the rotary encoder to confirm the selection of the option action **“BACK”**.
13. You will be presented with the question **“APPLY VISUAL CHANGES?”**
14. TURN the rotary encoder to highlight the option **“YES”** and tap the rotary encoder to confirm the selection.
15. TURN the rotary encoder 2 clicks to the RIGHT (CLOCKWISE) to navigate to the option labeled **“BACK”**.
16. TAP the rotary encoder to confirm the selection of the option action **“BACK”**.
17. You are now returned to the primary screen view displaying the zone, source input and volume level of the associated zone.

## 2B. CUSTOMIZATION OF ROTARY ENCODER DIAL BACKLIGHT: ON STANDBY

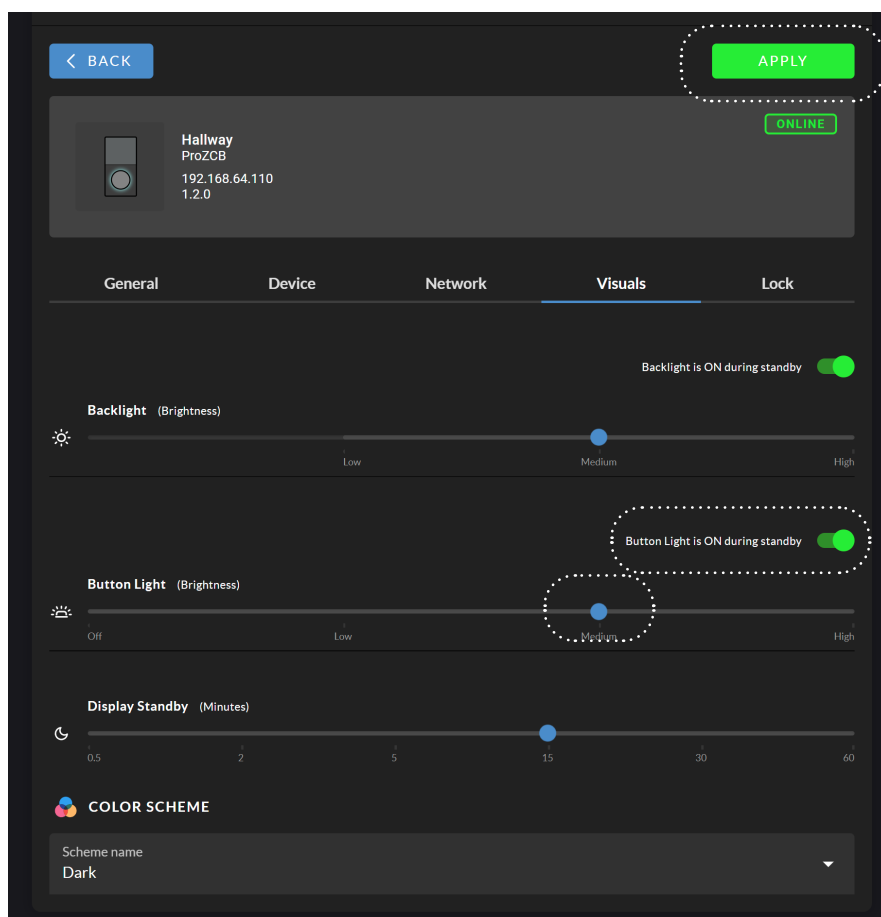
To enhance the ideal user experience, the backlight of the rotary encoder dial can also be deactivated, when the display is in standby mode.

This feature is useful when lighting conditions of the room change – e.g., from bright sunlight during the day to darker conditions in the evening.

The adjustment can be made directly on the wall controller itself or changed within the Web App.

Via the Origin PRO Web App: First turn the toggle switch to the left – so the text **“BUTTON LIGHT IS OFF DURING STANDBY”** is displayed.

Afterwards, click the button labeled **“APPLY”** in the top right-hand corner to activate the feature.



Via the Settings Menu of the PROZCB | PROZCW Wall Controller:

To deactivate the backlight of the rotary encoder dial when the display is in standby mode via the PROZCB | PROZCW Wall Controller device, simply follow the steps outlined below.

1. PRESS AND HOLD the rotary encoder until the settings menu appears.
2. TAP the rotary encoder to confirm the selection of the **“SETTINGS”** menu.
3. TAP the rotary encoder to confirm the selection of the **“VISUALS”** menu.
4. TURN the rotary encoder one click to the right (clockwise) and tap the rotary encoder to confirm the selection of the option labeled **“BUTTON LIGHT”**.
5. TURN the rotary encoder one click to the left (anticlockwise) and tap the rotary encoder to confirm the selection of the option labeled **“STANDBY”**.
6. TURN the rotary encoder left and right to toggle between the display standby options **“ON”** and **“OFF”**.
7. TAP the rotary encoder to confirm your preferred display standby setting (ON means the rotary encoder dial backlight remains on even when PROZCB | PROZCW Wall Controller device is in standby mode).
8. TURN the rotary encoder 2 CLICKS to the RIGHT (CLOCKWISE) to navigate to the option labeled **“BACK”**.
9. TAP the rotary encoder to confirm the selection of the option action **“BACK”**.
10. TURN the rotary encoder 1 CLICK to the RIGHT (CLOCKWISE) to navigate to the option labeled **“BACK”**.
11. TAP the rotary encoder to confirm the selection of the option action **“BACK”**.
12. You will be presented with the question **“APPLY VISUAL CHANGES?”**
13. TURN the rotary encoder to highlight the option **“YES”** and tap the rotary encoder to confirm the selection.
14. TURN the rotary encoder 2 CLICKS to the RIGHT (CLOCKWISE) to navigate to the option labeled **“BACK”**.
15. TAP the rotary encoder to confirm the selection of the option action **“BACK”**.
16. You are now returned to the primary screen view displaying the zone, source input and volume level of the associated zone.

### 3. CUSTOMIZATION OF DISPLAY SCREEN COLOR SCHEME

The high-resolution screen provides information and menu settings. Via the color LCD display, you will be able to clearly see:

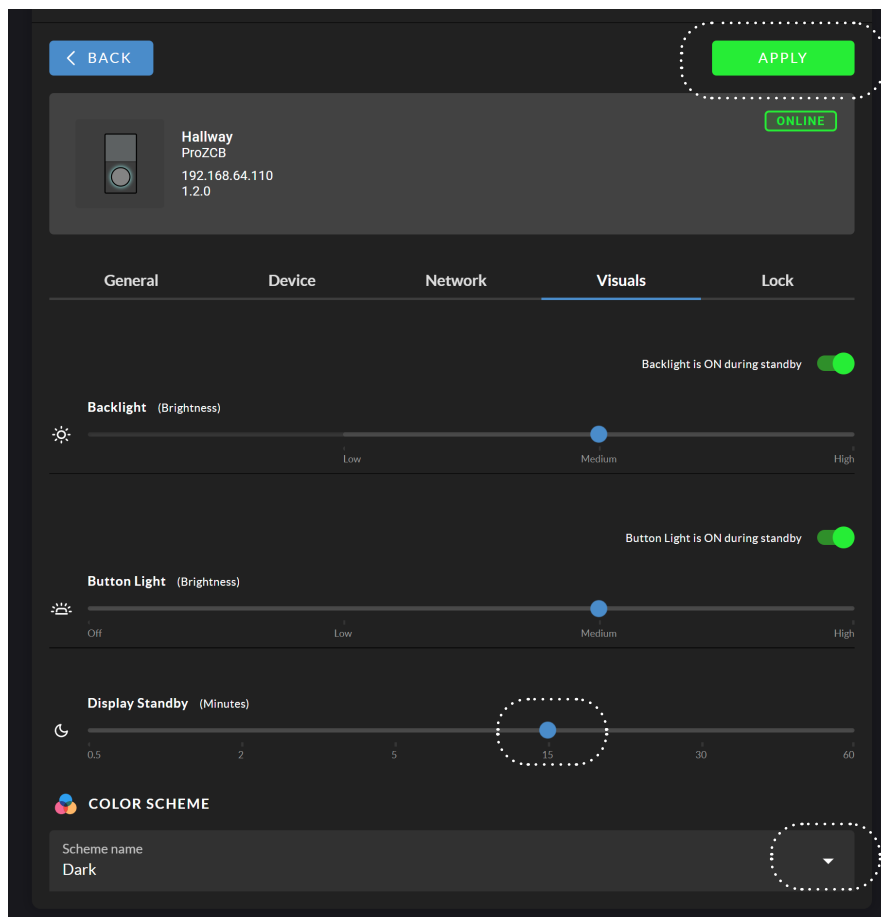
- the zone the controller is associated with
- the audio source input that is selected
- the current volume level.

A choice of 2 different color schemes also provides the possibility to customize the display to best match the use environment and/or personal preference.

- DARK = White & Blue Text on Black Background.
- LIGHT = Black & Blue Text on White Background.

**NOTE:** By default the color scheme is set to “DARK”. Customization can be made within the Web App, or directly via the device itself.

Via the [Origin PRO Web App](#): The color scheme can be quickly changed via the drop-down menu located at the bottom of the “**VISUALS**” tab. Simply choose the preferred color scheme, and then click the button labeled “**APPLY**” in the top right-hand corner to activate the change.



Via the Settings Menu of the PROZCB | PROZCW Wall Controller: To change the screen color scheme via the device, simply follow the steps outlined below.

1. PRESS AND HOLD the rotary encoder until the settings menu appears.
2. TAP the rotary encoder to confirm the selection of the **“SETTINGS”** menu.
3. TAP the rotary encoder to confirm the selection of the **“VISUALS”** menu.
4. TURN the rotary encoder ONE CLICK to the LEFT (ANTICLOCKWISE) and TAP the rotary encoder to confirm the selection of the option labeled **“COLOR SCHEME”**.
5. TURN the rotary encoder left and right to explore the options available, as shown on the screen.
6. TAP the rotary encoder to confirm the desired color scheme.
7. TURN the rotary encoder to the RIGHT (CLOCKWISE) until you have navigated to the option labeled **“BACK”**.
8. TAP the rotary encoder to confirm the selection of the option action **“BACK”**.
9. TURN the rotary encoder 3 clicks to the RIGHT (CLOCKWISE) to navigate to the option labeled **“BACK”**.
10. TAP the rotary encoder to confirm the selection of the option action **“BACK”**.
11. YOU will be presented with the question **“APPLY VISUAL CHANGES?”**
12. TURN the rotary encoder to highlight the option **“YES”** and tap the rotary encoder to confirm the selection.
13. TURN the rotary encoder 2 CLICKS to the RIGHT (CLOCKWISE) to navigate to the option labeled **“BACK”**.
14. TAP the rotary encoder to confirm the selection of the option action **“BACK”**.
15. You are now returned to the primary screen view displaying the zone, source input and volume level of the associated zone.

## 4. LOCAL USER LOCK AND UNLOCK (PIN CODE PROTECTION)

A 4-digit numerical pin code can be set, reset, and enabled within the Web App to restrict usage of the device.

When enabled, no one can operate the device and/or adjust the settings - unless they are able to enter the correct PIN code. This makes it possible to place devices in areas where unauthorized room users have easy access to the device.

**Note:** *The PIN code can always be reset via the Web App. This solves the problem of potentially forgotten PIN codes, whilst also providing the opportunity to change the PIN code if circumstances change.*

The PIN code protection can either be kept deactivated (“OFF”) or applied at 3 different levels: (A) “Settings Only”; (B) “All Access”, and (C) All Access (Dual PIN).

### LEVEL A: “SETTINGS ONLY” - APPLIED TO PROTECT ACCESS TO THE SETTINGS MENU ONLY

*Typical Use Case Scenario: Example – the wall controller devices are installed within easy reach of authorized users (e.g., workers) of a café. Enabling the local user lock function and setting it to “Settings Only” allows the users to adjust volume and switch audio source, but prevents the users being able to customize the device, change critical settings or reset the device.*

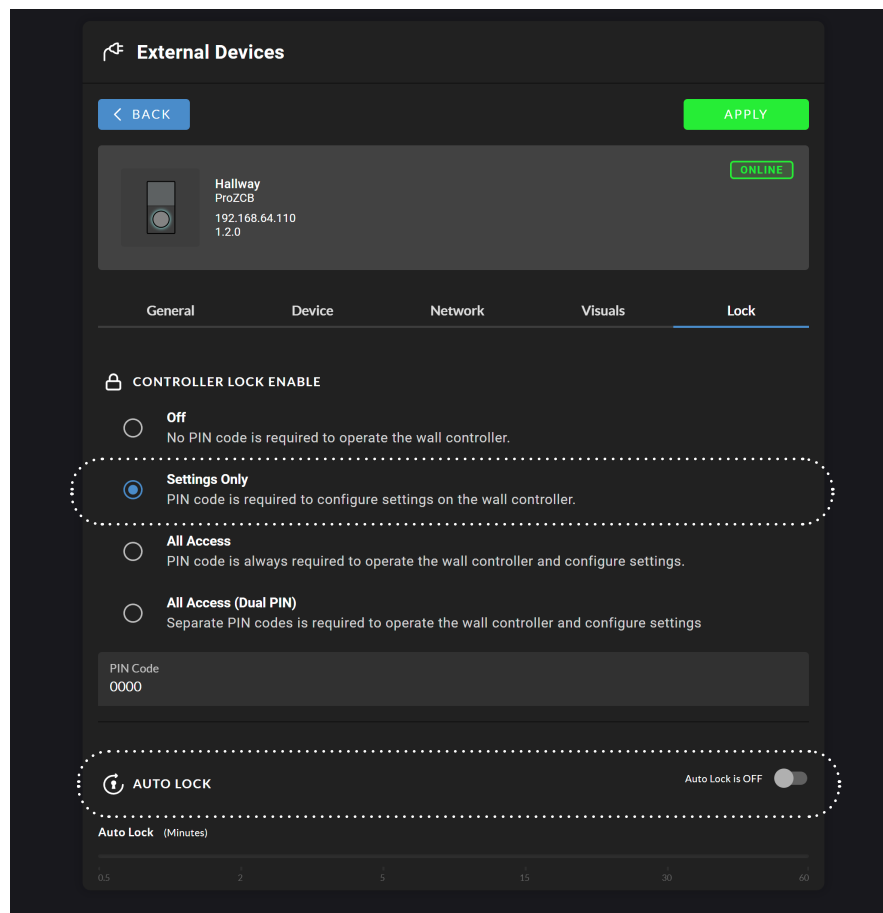
- The device remains completely unlocked for use by any user with physical access to the device, and all functions of the wall controller are available.
- Users are only prompted to enter the correct PIN code when attempting to access the “Settings” menu on the device. They will need to turn the rotary encode dial to select each digit on the screen; and pushing the dial to confirm each digit, in order to enter the PIN.
- The functions restricted by PIN code are:
  - Visuals (settings relating to customization of standby, backlights and color scheme).
  - Reset Device (ability to completely reset the device).
  - IP Settings (ability to adjust the IP settings of the device).
- When the correct PIN is entered, and the device successfully unlocked, all functions under the settings menu become accessible.



## LEVEL A: SETUP STEPS:

1. Using the Web App, navigate to the “Lock” tab and select the option **“SETTINGS ONLY”** shown under the headline **“CONTROLLER LOCK ENABLE”**.
2. Type into the box labeled **“PIN CODE”** a 4-digit PIN code of your choice (we recommend changing the PIN code, otherwise it will remain ‘0000’).
3. Click the button labeled **“APPLY”** in the top right-hand corner to activate the feature as configured.

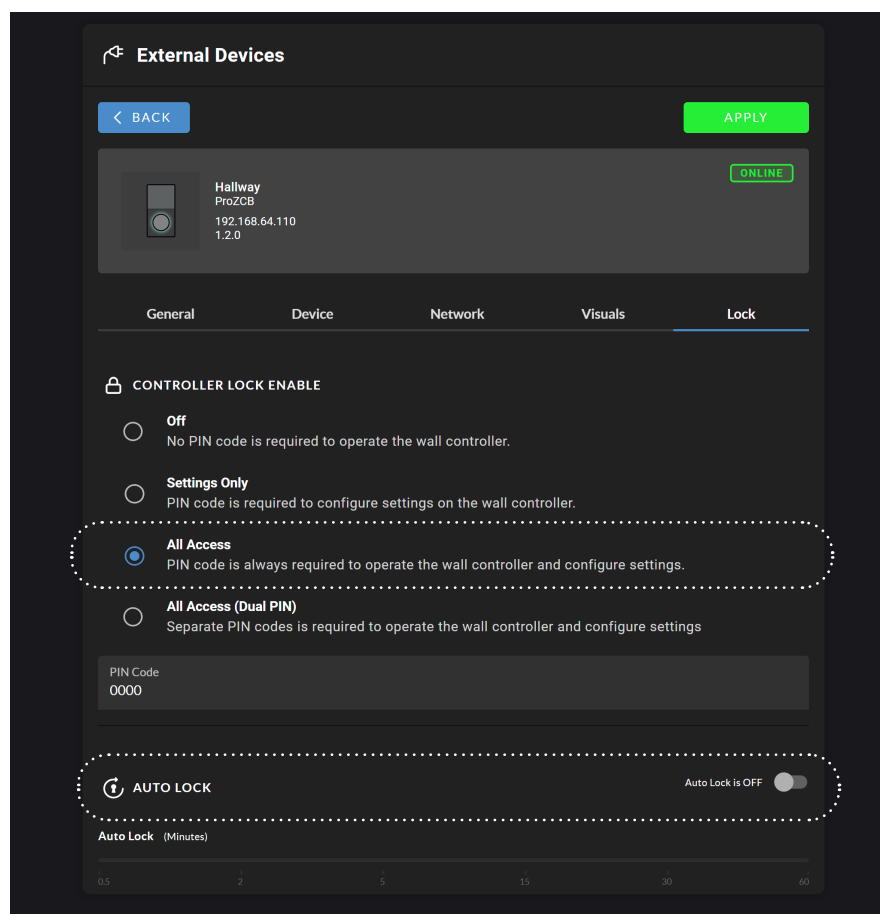
**Note:** The “Auto Lock” function is *NOT* an available option under this second level. The locking of the settings menu applies all the time, from the instant the option is applied in the Web App.



## LEVEL B: "ALL ACCESS" - APPLIED TO PROTECT ACCESS TO ALL FUNCTIONS

*Typical Use Case Scenario: Example - PROZCB | PROZCW Wall Controller devices are placed within easy reach of customers of a café. Enabling the local user lock function and setting it to "All Access" prevents the possibility of customers adjusting the volume, switching the audio source, or making any other adjustment to the installed system.*

- None of the functions of the PROZCB | PROZCW Wall Controller device will be accessible, until unlocked.
  - If a user attempts to use the device, they are prompted to enter the correct PIN code on the device – turning the rotary encode dial to select each digit on the screen; and pushing the dial to confirm each digit.
  - Once successfully unlocked, functions become accessible.
- **NOTE:** To enter the "Settings" menu you will be prompted to enter the PIN code again – this helps ensure the security of the device whilst the Auto Lock function is off.



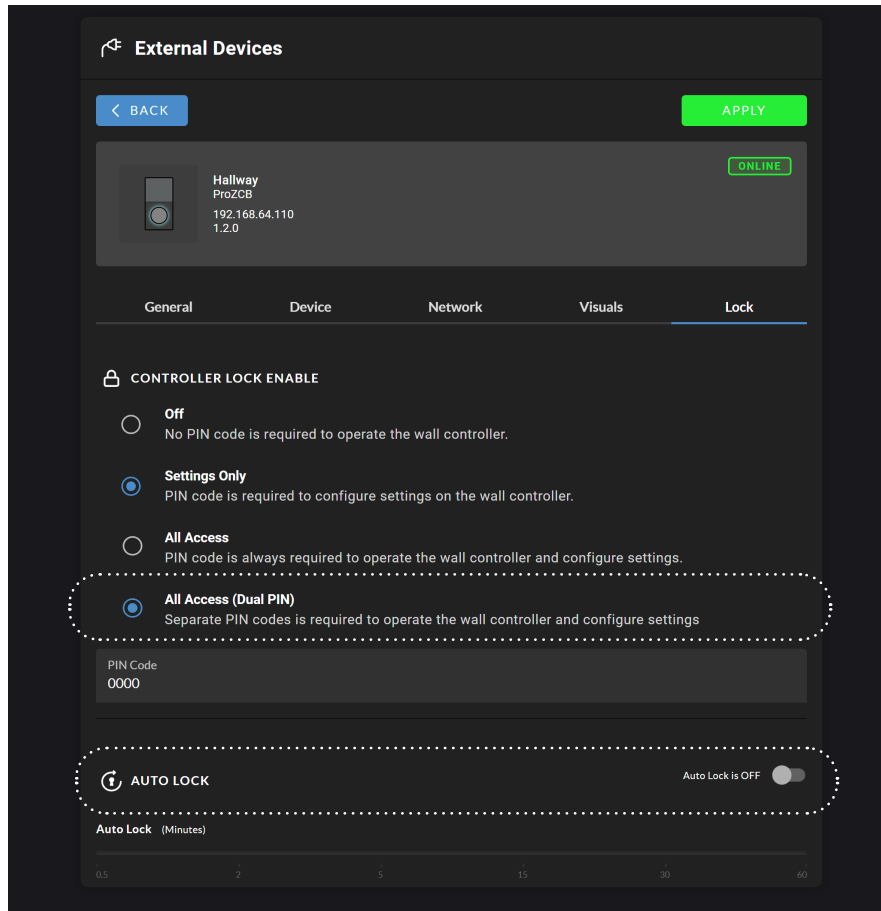
## LEVEL B: SETUP STEPS

1. Using the Web App, navigate to the **“LOCK”** tab and select the option **“ALL ACCESS”** shown under the headline **“CONTROLLER LOCK ENABLE”**.
2. Type into the box labeled **“PIN CODE”** a 4-digit PIN code of your choice (we recommend changing the PIN code, otherwise it will remain ‘0000’).
3. Toggle to the right the switch labeled **“AUTO LOCK”** - it will turn green (active) and display the label **“AUTO LOCK IS ON”**.
4. Using the slider, select the desired period of time to elapse before the controller is locked, and thus requiring the entering of the correct PIN code to unlock. (We suggest that under many circumstances the shortest period of 30 seconds would be suitable).
5. Finally, click the button labeled **“APPLY”** in the top right-hand corner to activate the feature as configured.
6. Once activated, you can choose to manually lock the device immediately, or let the device automatically lock itself after the period of period of time selected on the Auto Lock slider.
7. To manually lock the device immediately, do as described.
  - Press and hold the rotary encoder of the device until the option **“LOCK CONTROLLER”** appears on the display screen.
  - Tap the rotary encoder to confirm the action to **“LOCK CONTROLLER”** - you will be immediately presented with the message **“CONTROLLER LOCKED”**, and thereafter a padlock icon will appear on the display screen of the device; indicating the device is now locked – thus requiring the entering of a PIN code to unlock.
8. To let the device automatically lock itself, do as described.
  - Wait until the period of time selected on the Auto Lock slider has elapsed. You will subsequently notice a padlock icon appear on the display screen of the device, indicating the device requires the entering of a PIN code to unlock.
9. To unlock the device, the user must enter the correct PIN code on the device. This is performed by turning the rotary encode dial to select each digit on the screen; and pushing the dial to confirm each digit.

## LEVEL C: "ALL ACCESS (DUAL PIN)" - APPLIED TO PROTECT ACCESS TO ALL FUNCTIONS WITH DUAL PIN

*A highest level of security is available with Option C, enabling different PIN controlled access to the wall controller device operation and settings. This option enables, for example, workers with different responsibilities to have access only to the functions required by their roles.*

Level C setup is carried out in a similar way to Level B described in the previous section. The only difference is that two 4 digit PINs are now required.

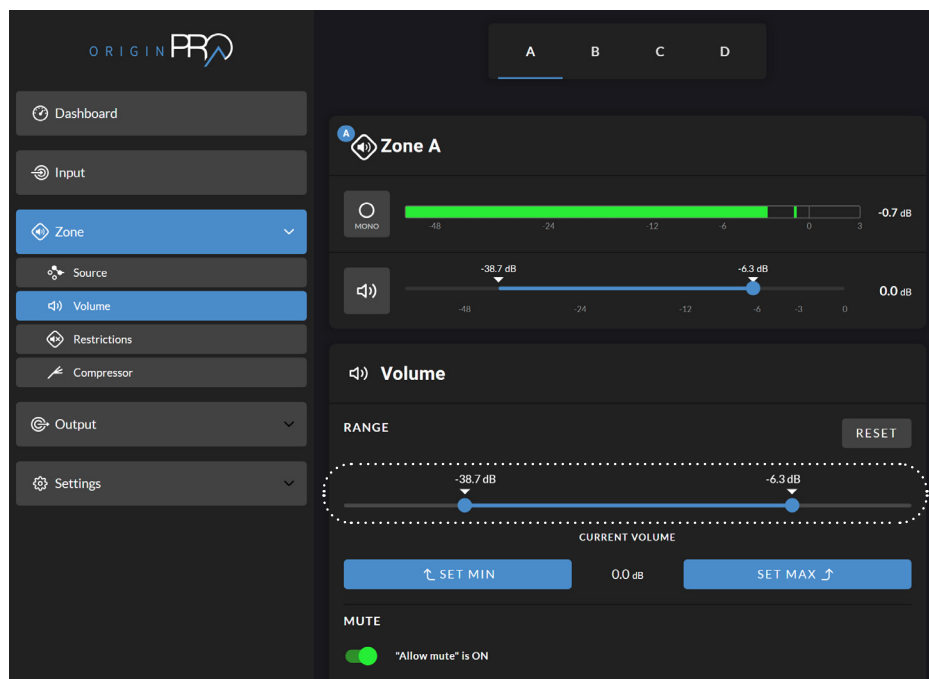
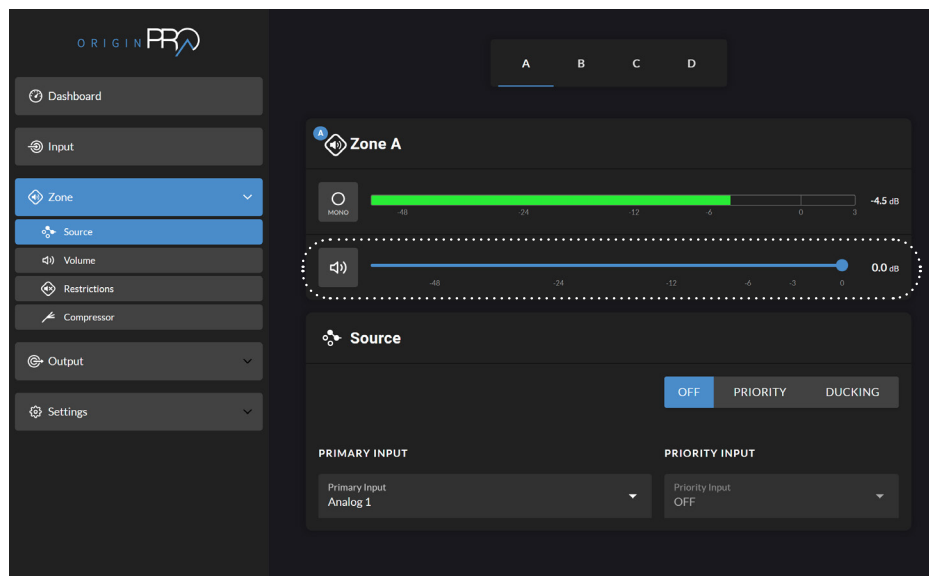


## 5. VOLUME CONTROL (RANGE) LIMITATION

A lower (minimum) and upper (maximum) volume limitation can be applied to the zone the device is configured to control.

This feature is useful in scenarios where the total power of the channel output greatly exceeds the volume suitable for the installation environment. The feature is also very useful to apply in scenarios where it is preferred the volume does not fall below a certain level - with the exception of complete muting.

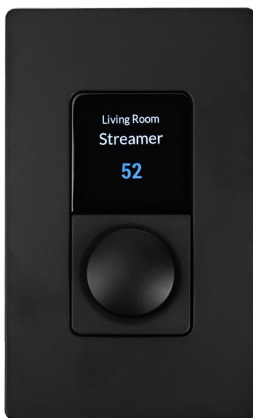
Within the Web App, this feature can be found by navigating to the volume menu of the Zone Tab, within the Web App (see below).



On the device, the end user is made visually aware of the volume range limitation when adjusting the volume level (see below).



As a convenience to the user, the volume settings on the device are always displayed as a relative level on a scale of 0 – 100, rather than in decibels.



**Note:** If the volume is turned below the minimum level, the output is completely muted, and the mute icon is shown on the display screen.

*It is also possible to disable the amplifier zone mute function. This can be particularly significant in situations where important information potentially needs to be heard in a specific zone. To disable or enable the the mute function, toggle the “ALLOW MUTE” switch in Volume menu of the Zone Tab.*

## 9. DEVICE RESET

It is possible to reset a PROZCB | PROZCW Wall Controller device back to its factory-default state. **NOTE: When resetting the device, any previous settings including IP address information is cleared.**

The use of this function is only required in exceptional circumstances whereby a complete device reset is necessary. To perform a complete device reset, follow the steps outlined below.

1. Press and hold the rotary encoder until the **“SETTINGS”** menu appears. Then tap the rotary encoder to confirm the selection of the “Settings” menu.



2. Turn the rotary encoder one click to the left (anticlockwise) and tap the rotary encoder to confirm the selection of the option labeled **“RESET DEVICE”**. Then tap the rotary encoder to confirm the selection of the option action **“RESET DEVICE”**.

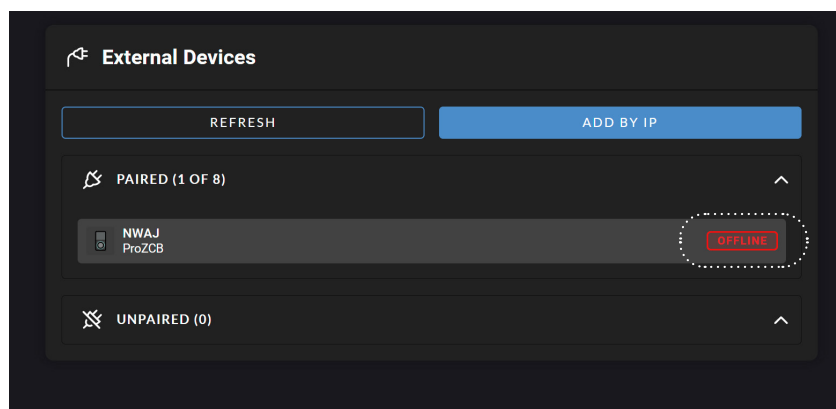
3. You will be presented with the question **“RESET TO FACTORY DEFAULTS?”**

4. Turn the rotary encoder to highlight the option **“YES”** and tap the rotary encoder to confirm the selection.

5. After a few seconds the device will turn off, then restart and show a new pairing code on the display screen.

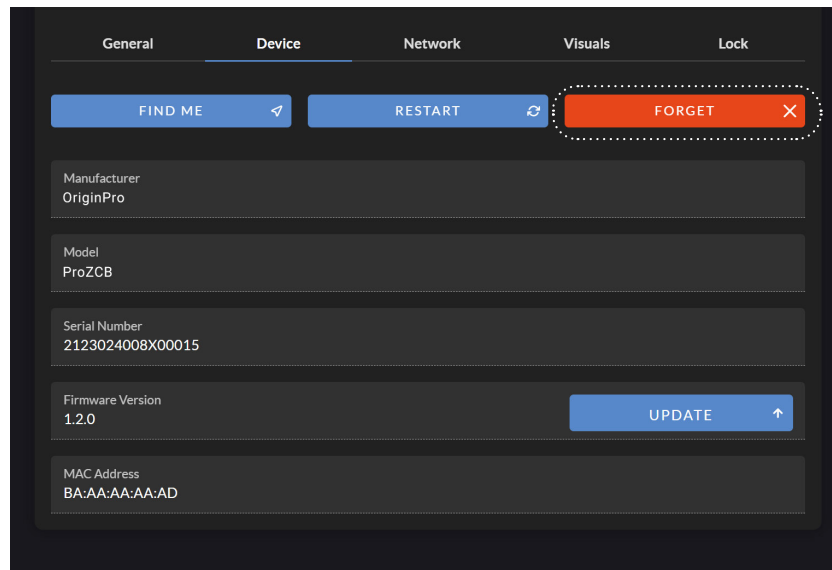
6. In the Web App, you will notice the device you just reset shows up with a red box stating the device is **“OFFLINE”**

(as shown below).



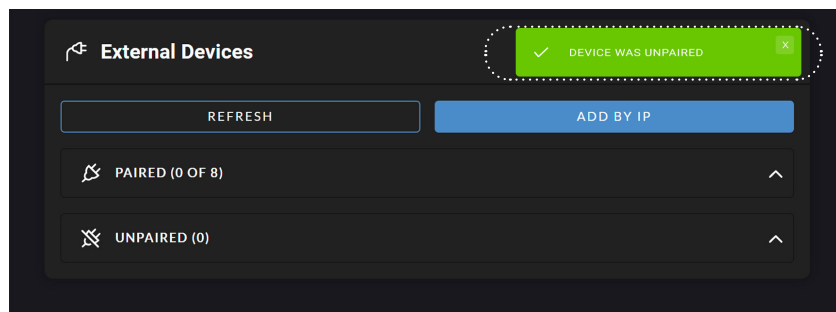
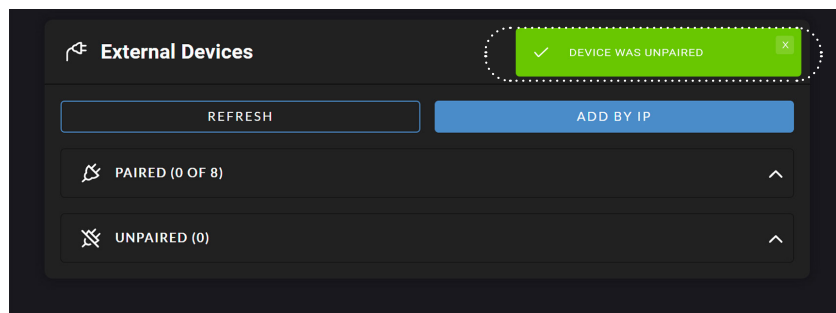
7. In the Web App, click on the device and navigate to the **“DEVICE”** tab.

8. In the bottom right-hand corner of the device tab there is a red button labeled **“FORGET DEVICE”** – click this to completely remove the device from the system.



9. You will be returned to the **“EXTERNAL DEVICES”** page and a green pop-up will state **“DEVICE WAS UNPAIRED”** – confirming the completion of the process.

10. The device is now ready to be re-paired and configured.





## 10. DEVICE SPECIFICATIONS

Specifications	ProZCB   ProZCW
Amplifier Compatibility	Origin PRO ProA Series Amplifiers
Color	Black   White
Operating Temperature Range	0-40°C (32-104°F)
Exterior & Mechanical Parts Material	Plastic (ABS-PC)
Base Construction & Shield Material	Pre-galvanized steel
Power Consumption	PoE Class 1 / 3.84 W max
Power Supply	Power to the RJ45 ethernet port on the rear of device using a category 5e cable (or faster STP) with the use of a standard PoE switch, or PoE injector
Standby Modes	6 settings available: 30 secs, 2 mins, 5 mins, 15 mins, 30 mins, 60 mins
Connection & Data Protocol	RJ45, or CAT 5e (or faster STP)
Maximum Cable Length (CAT 5e)	100m (328ft)
IP Rating	IP 30
External Dimensions (H x W)	4.53 x 2.78in (115.1 x 70.6mm)
External Dimensions, Depth <i>[From rear side of mounting plate to outer side of shield box]</i>	0.91in (23.1mm)
External Dimensions, Depth <i>[From tip of rotary encoder dial to outer side of shield box]</i>	1.68in (42.8mm)
Mounting Holes, Distance <i>(Center to Center)</i>	3.29in (83.5mm)
Display Screen Dimension <i>(excluding black border)</i>	27.72mm x 27.72mm
Display Screen Area <i>(excluding black border)</i>	768.4sq mm
Display Screen Resolution	240 x 240 pixels
Display Screen Type	RGB, Transmissive / Normally Black
Display Screen Material	High gloss polished transparent acrylic
Weight	4.2oz (120g)
Warranty	2 Years

## 11. TECHNICAL ASSISTANCE

If you have any questions or concerns about installing or using this product, you can reach us through the following method:

Phone: (844) 674-4461

Hours of operation: 8:00am - 5:00pm (Pacific Time), Mon - Fri

If you are having technical trouble, please have your model number ready and be prepared to explain briefly what steps you took to resolve the problem, to be best helped over the phone.

If you are considering returning the product, it's required that you contact Origin PRO prior to any return attempts. This way we can determine if the issue can be resolved without returning the product, or if needed we can provide instructions and support for the return process.

## 12. LIMITED 2-YEAR WARRANTY

Origin PRO warrants to the original retail purchaser only that this Origin PRO product will be free from defects in materials and workmanship, provided the speaker was purchased from an Origin PRO authorized dealer. If the product is determined to be defective, it will be repaired or replaced at Origin PRO's discretion. If the product must be replaced yet it is no longer manufactured, it will be replaced with a model of equal to or greater value that is the most similar to the original. If this is the case, installing the replacement model may require mounting modifications; Origin PRO will not be responsible for any such related costs.

### *Requirements & Warranty Coverage*

This warranty may not be valid if the product was purchased through an unauthorized dealer. This warranty only applies to the individual that made the original purchase, and it cannot be applied to other purchases. The purchaser must be prepared to provide proof of purchase (receipt). This warranty will not be valid if the identifying number or serial number has been removed, defaced, or altered.

### *Not Covered by Warranty*

- Accidental damage
- Damage caused by abuse or misuse
- Damage caused by attempted repairs/modifications by anyone other than ORIGIN PRO or an authorized dealer
- Damage caused by improper installation
- Normal wear, maintenance, and environmental issues
- Damage caused by voltage inputs in excess of the rated maximum of the unit
- Damage inflicted during the return shipment

All warranties and warranty conditions are subject to change. Please refer to [www.originpro.com](http://www.originpro.com) for the latest information.

## 13. RETURN PROCESS

Before making any return attempts, it is required that you first contact Origin PRO. Return product to Origin PRO or your dealer, either in person or by mail. It's preferable if the product is returned in the original packaging. If this is not possible, the customer is responsible for insuring the shipment for the full value of the product. This warranty is in lieu of all other expressed or implied warranties. Some states do not allow limitations on implied warranties, so this may not apply depending on the customer's location. (For more information, see Magnuson-Moss Warranty Act.)

